

KONWA®

KW-351  
STEAMER



INSTRUCTION MANUAL  
&  
PARTS LIST

## **PRODUCT DESCRIPTION**

### **Application**

The product is an appliance for ironing clothes and cleaning ironed textiles, which is widely used in clothing shops, marriage photographing and hotels.

### **Storage**

Drain off water thoroughly from the appliance and pack it with a paper box when it is not in used.

### **Use After Storage**

Check the steam pipe before use to see whether the inlet and outlet pipes have been blocked and whether the power line has been damaged. If there is block, please get rid of clogging before using it. And if there are damages in the power line, please contact professional personnel for maintenance and exchange.

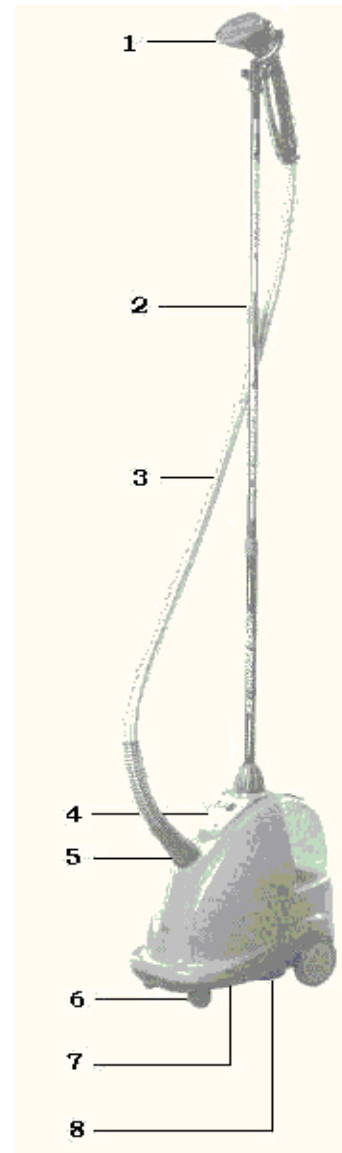
### **Safety Protection Apparatus**

1. Water Shortage Automatic Power- cut Protector  
When water shortage happens in the steam generator, the protector will make hurried alarms like bee, bee, bee sounds, reminding to add water, and cut off the power to stop heating (It will automatically get the power back for normal function when water is added.)
2. Thermostat  
When water shortage happens in the steam generator, the temperature of the steam generator will be controlled within the limited temperature range by the thermostat to effectively prevent dangers caused by high temperature in case of water shortage.
3. Thermal Fuse Cut Out  
If the above two protection measures are out of function, the thermal fuse cut out will be in function. When the temperature of the steam generator reaches the thermal fuse cut out preset temperature, the thermal fuse cut out will be melted in time. Thus the power is out off and the dangers can be prevented.

**Caution: Please do not use it any more if safety protection measures are damaged.**

## **MAIN CHARACTERISTICS**

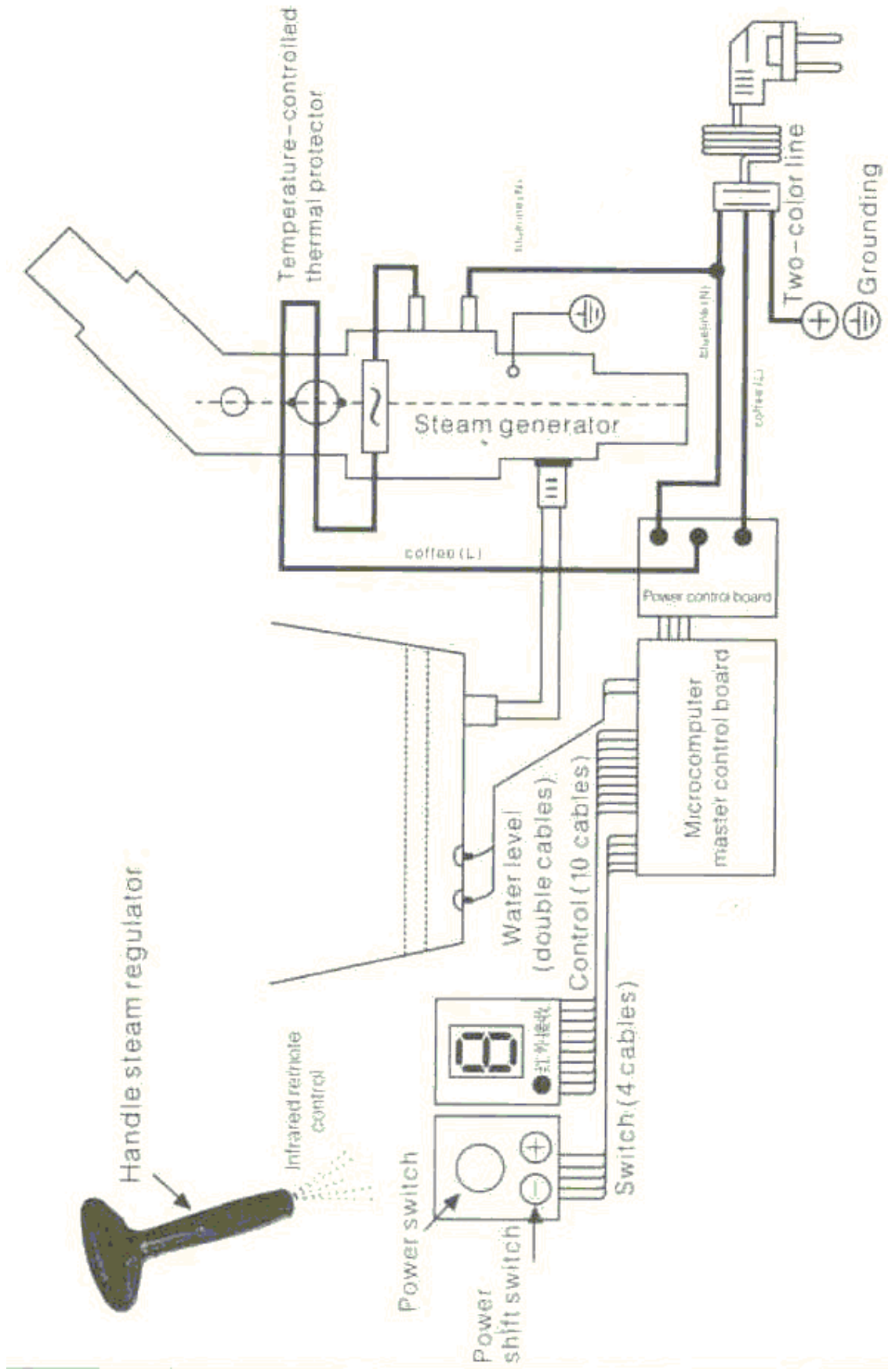
1. The fashionable anti-slip pothook for the sprinkler can effectively prevent the sprinkler from falling to the ground caused by careless use.
2. The adjustable ironing appliance-supported pole can be rapidly and conveniently used and its height can be regulated according to the length of clothes and user's height.
3. The weaving heat isolation layer of the air vessel can prevent the air vessel overhead when it is used.
4. The digital display screen can evidently show the current power when the appliance is in function.
5. The plug-in connection apparatus for the air vessel can be inserted by hand and turned it around from right to left. It is fast and has good seal capability without any gas and water leakage.
6. The all-direction wheels at the bottom can be moved conveniently.
7. The steam filter anti-condensation apparatus can effectively control the temperature of the steam and effectively prevent condensed water leaking out and avoid the clothes from being wet.
8. The concealed wiring device.



## **ELECTRIC CIRCUIT DIAGRAM**

### **Main Technical Parameter :**

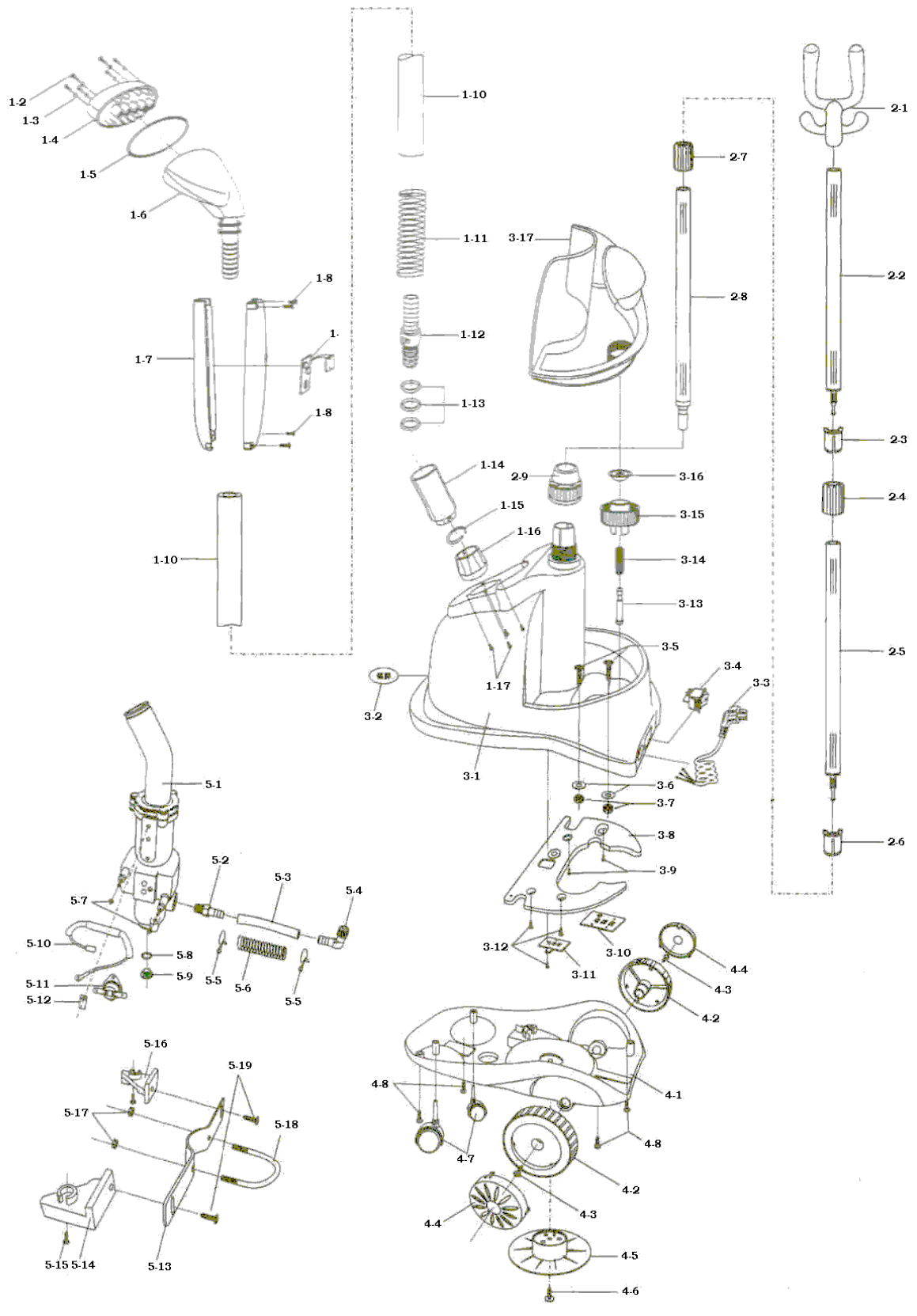
Voltage	: 240V
Hertz	: 50Hz
Input Power	: 1600W
Water Storage Capacity	: 2.5 liter
Stored Water Continuously Generating Gas Time	: 2.0H
Rated Pressure	: 10000BA
Allowable Pressure	: 80000BA
Rated Evaporation Rate	: 20ml / min
Vaporization Temperature At The Outlet	: 98°C
Noise	: <60dbc(A)
The Highest Point Of The Supporting Pole	: 1700mm
The Lowest Point Of The Supporting Pole	: 980mm
The Adjustable Height Of The Upper Pole	: 850mm
The Extension Length Of The Air Tube	: 1600mm
Gross Weight	: 6.8kg
Net Weight	: 5.8kg
Packing Size	: 440 x 268 x 410mm



## **ACCESSORIES DIAGRAM**

<b>Accessories Diagram</b>	
1-2	Screw M4x6
1-3	Shim for the sprinkler lid
1-4	Lid for the steam sprinkler
1-5	Seal loop for the sprinkler
1-6	Sprinkler
1-7	Handle of the steam sprinkler
1-8	Screw
1-9	1.9 Remote control
1-10	Air vessel
1-11	Spring of the protection pipe
1-12	Joint of the steam pipe
1-13	Seal loop
1-14	Casing of the joint for steam pipe
1-15	Circlet
1-16	Base of the joint
1-17	Screw M3x8
2-1	Pothead for hanging the sprinkler
2-2	Upper pole
2-3	Upper inflatable pole
2-4	Protective casing of the upper hole
2-5	Middle pole
2-6	Lower inflatable pole
2-7	Protective casing of the lower pole
2-8	Lower pole
2-9	Revolve handle for locking the pole
3-1	Upper hull
3-2	Name plate
3-3	Power bus
3-4	Switch
3-5	Water level indication screw
3-6	Seal loop
3-7	Screw cap M4
3-8	Body for increasing weight
3-9	Screw M4x16
3-10	Circuit main board

<b>Accessories Diagram</b>	
3-11	Power control board
3-12	Screw M3x8
3-13	Sliding needle for lid of water tank
3-14	Small spring
3-15	Lid of water tank totality
3-16	V-shape for the lid of water tank
3-17	Water tank
4-1	Behind hull
4-2	Behind hull
4-3	Screw M4x16
4-4	Lid of the behind wheel
4-5	Base for abounding wire
4-6	Screw M4x16
4-7	Screw M4x16
4-8	Screw M4x16
5-1	Bent pole
5-2	Water inlet joint
5-3	Small leather pipe
5-4	Bent joint for the water inlet
5-5	Small circlet
5-6	Small spring of protection pipe
5-7	Screw cap 3mm
5-8	Sealed shim
5-9	Screw for blocking water
5-10	Heat protector 250 degree
5-11	Temperature control for 150°C
5-12	Heat insulated fixed casing
5-13	Heat insulated fixed casing
5-14	Left fixed board
5-15	Screw M4x16
5-16	Right fixed board
5-17	Screw cap M4
5-18	Screw M4x12
5-19	Fixed screw



## **TROUBLESHOOTING**

<b>Phenomenon</b>	<b>Reason</b>	<b>Solution</b>
Not functioning at all	Is the power plug plugged? Is there any trouble with the circuit? Is the fuse cut out burn off?	Contact professional personnel to repair.
A small volume of steam	Do deposits block the pipe? Is the voltage too low?	Clean the deposits away with the cleanser. Suggest installing the Monistat.
Hot steam generated in the water tank	Does deposits or other substance block the pipe? The air vessel is bent or fumaroles are blocked?	Clean away deposits or the blocked substance. Let the air vessel direct and do not close the air outlet.
Steamed water leakage happens at the connection place of the steam circuit	Is the seal loop aging? Is there loose between the air vessel and the pipe joint?	Replace the seal loop. Get the joint of the air vessel tight.
Water leakage happens in the sprinkler	Is the sprinkler broke?	Replace the sprinkler.
The inner of the air vessel makes noise	Is the air vessel bent? The sprinkler is below the horizontal line at ironing?	Unbend the air vessel to get the sprinkler higher.
The water tank is deformed	Is super hot water added in?	Continue using the water tank or replace it.
The flex hanging ironing pole is pulled out	Operate it without following the regulations?	Continuously insert it in.
There is no steam at the setup, but the power indication will display	The steam generator is burned down, or inadequate contact happens because of the loosing of the plug in the temperature probe is broken?	Contact professional personnel to check.
Alarm arises when water level is normal or no alarm when water level is abnormal	There is dirt on water level indication screw in the water bucket or there are too many deposits?	Clean the water level indication screw.

## **SAFETY PRECAUTIONS**

- Do not use the product if you have not carefully read the user's manual.
- You would better use the 30MA power resource equipped with the electricity leakage protection switch when you are using this product.
- Do not use the product during checking.
- Please unplug the power plug during the maintenance.
- Do not use the product if the parts of the product are damaged, especially the safety protection apparatuses and the power line.
- Do not try to repair the damaged structure of the product by yourself. You should contact professional personnel to repair it because the improper maintenance will cause electricity leakage and accidents.
- Do not dismantle safety apparatuses by yourself because that will cause dangers.
- Do not unplug the plug at a way of pulling. The proper way is to unplug it by holding the head of the plug.
- Do not put the product in water or other liquids to avoid electricity leakage.
- When the product is in use, do not walk away, and do not let children touch it and do not touch the heater. Pay attention not to be scalded by hot water when pour out remaining water from the steamer.
- When the sprinkler of the air vessel is unplugged at a high temperature state, please hold the heat insulated part to avoid being scalded.
- Do not bend the air vessel or block the air outlet because that will cause accidents resulting from high air pressure.
- Do not add hot water into the water tank, or the water tank will be deformed.
- If air or water leakage happens in the steam generator, please stop it promptly and contact professional personnel to maintain it.
- Let the products naturally cool down after using it.
- Please unplug the power plug when the product is not in use.
- Please do not add the cleanser into the water tank.

**KONWA®**

**KONWA INDUSTRIAL SEWING MACHINE (M) SDN BHD** (124740-M)

Head Office: Lot 11 & 13, Jalan 51/201, Off Jalan Tandang, Seksyen 51, 46050 Petaling Jaya,  
Selangor Darul Ehsan, Malaysia.

Tel: +603-7788 1111

Fax: +603-7788 5555

E-mail: [konwa@konwa.com.my](mailto:konwa@konwa.com.my) URL: [www.konwa.com.my](http://www.konwa.com.my)