

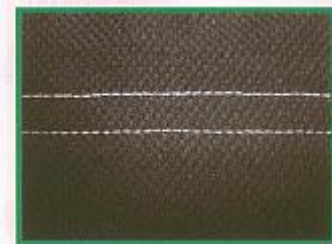
KW-1630

Single Needle, Compound Feed,
Lockstitch Sewing Machine



KW-1680

Double Needle, Compound Feed,
Lockstitch Sewing Machine



Model	Sewing Speed (r.p.m)	Stitch Length (mm)	Needle Bar Stroke (mm)	Presser Foot Lift (mm)	Alternating Vertical Movement (mm)	Rotating Hook	Needle	Voltage (V)	GW / NW (kg)	Packing Size (mm)
KW-1630	Max. 2000	Max. 10	38	By Hand=9 By Knee=16	2.5 - 6.5	Large Hook	DP x 17	240	50 / 45	730 x 327 x 695
KW-1680	Max. 2500	Max. 9	36	By Hand=9 By Knee=16	2.5 - 6.5	Large Hook	DP x 17	240	50 / 45	730 x 327 x 695

* Specifications and appearance are subject to change without prior notice.