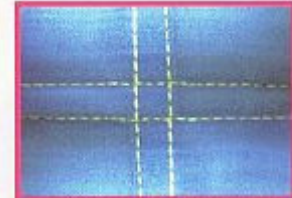


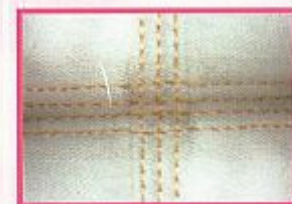
KW-2832

**High Speed, 2-Needle,
Feed-of-the-Arm,
Double Chainstitch Machine For
Light & Medium Weight Material**



KW-2833

**High Speed, 3-Needle,
Feed-of-the-Arm,
Triple Chainstitch Machine For
Medium & Extremely Heavy
Weight Material**



Model	Sewing Speed (s.p.m)	Stitch Length (mm)	Needle Gauge (mm)	Needle	Voltage (V)	GW / NW (kg)	Packing Size (mm)
KW-2832	Max. 4000	1.2 ~ 3.2	4.8	TV x 64	240	76 / 70	580 x 550 x 490
KW-2833	Max. 3500	1.4 ~ 4.2	6.4	TV x 5	240	76 / 70	580 x 550 x 490

* Specifications and appearance are subject to change without prior notice.