

KONWA[®]

KW-123 END CUTTER



INSTRUCTION MANUAL & PARTS LIST

CHECKING

A. ADJUSTING THE GRINDER

When the blade is worn out, adjust the grinder position by unscrewing the screw for the grinder arm so as to ensure a correct distance between the grinder and the blade edge. After finishing adjustment, screw up the screw.

B. REPLACING THE GRINDING WHEEL

Take off the grinding wheel by unscrewing it off. Mount the new grinding wheel then.

C. REPLACING THE KNIFE

1. Take off the grinding wheel unit.
2. Unscrew the lock nut for the knife.
3. Take off the knife.
4. When mounting the knife, make sure that the side printed with "this side up" should be placed facing the operator.
5. After the blade is replaced, adjust the position of the grinder at the proper.

D. REPLACING THE LOWER BLADE

1. To take off the lower blade arm by unscrewing the screw for the lower blade arm.
2. Replacing the lower blade by unscrewing the fixed screw.
3. Replace the lower blade and ensured the flat surface of the lower blade adjacent to the blade edge.

E. REPLACING THE CARBON BRUSH

1. Too much weaving of carbon brush will cause motor troubles. Carbon brush must be replaced when it wears to 5-6mm.
2. Carbon brush cap is replaced by turning it left by attached wrench.
3. Always replace right and left carbon brushes simultaneously.
4. Be sure to hold metallic part of the brush.

F. CLEAN THE TRACK AND THE MASTER MACHINE

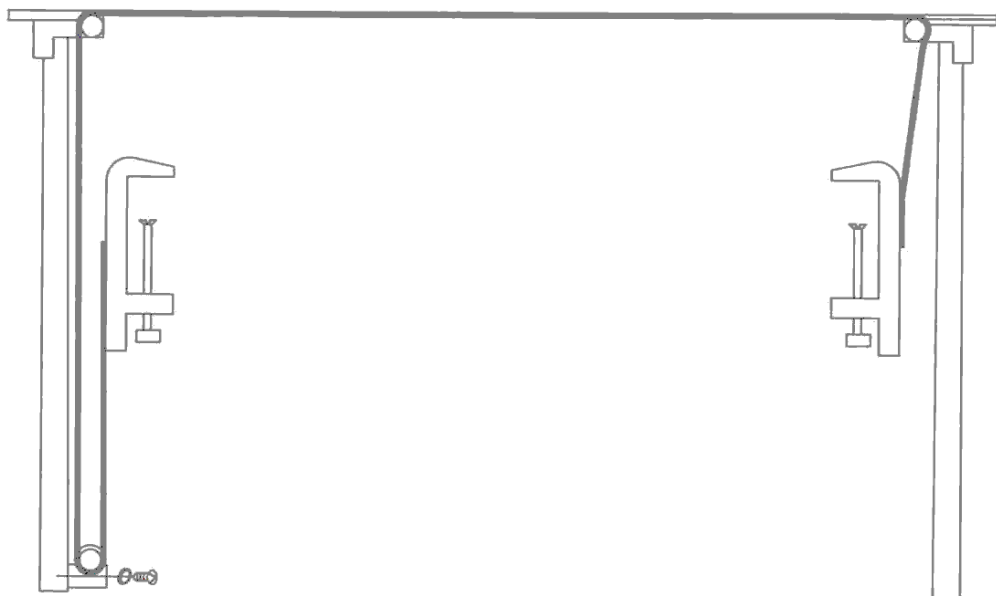
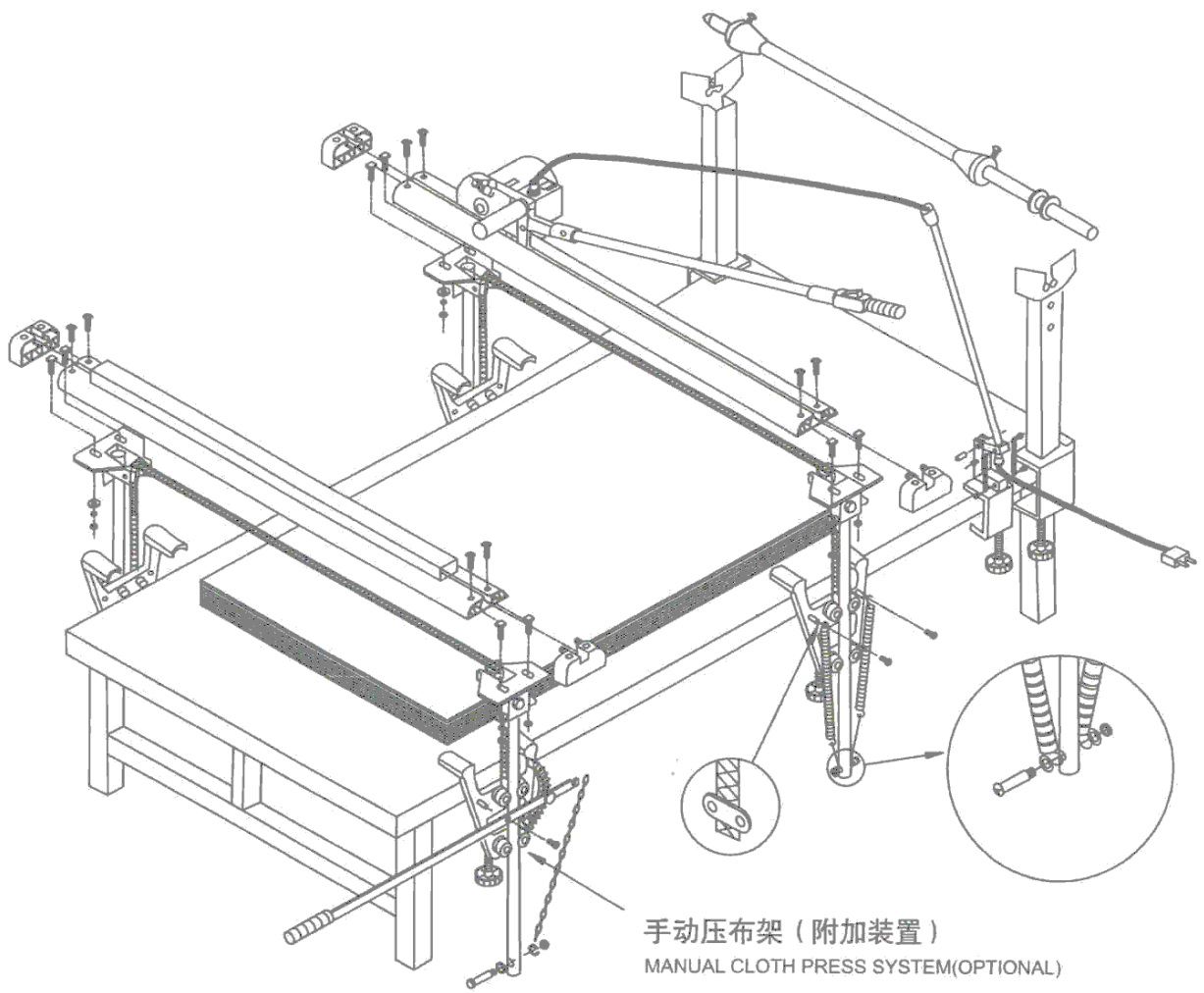
1. Clean all the wasted cotton and cloth in the track with a brush thoroughly after the machine is continuously running for 10 to 20 hours.
2. To take the master machine of the track and thoroughly clean the L-type track with a brush after the machine is continuously running for 30 days. Repeatedly cleaned it as shown in item. To mount the master machine in the track groove again after cleanness is ensured.

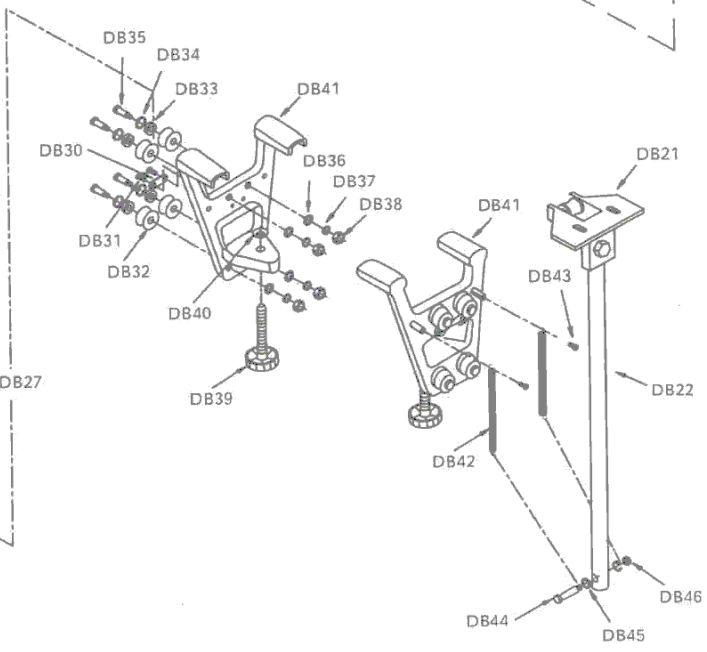
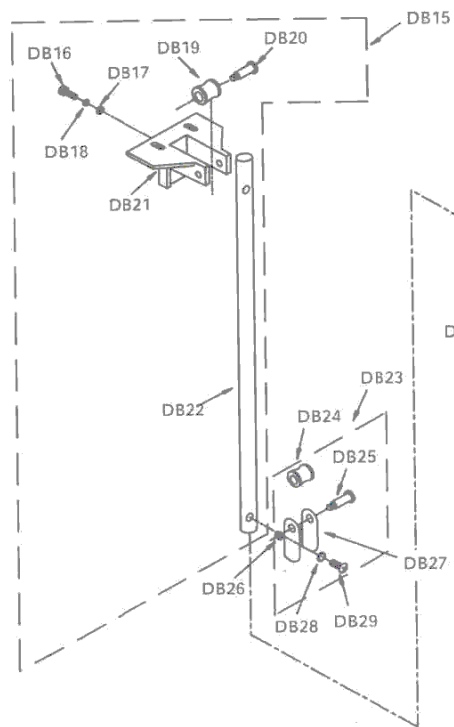
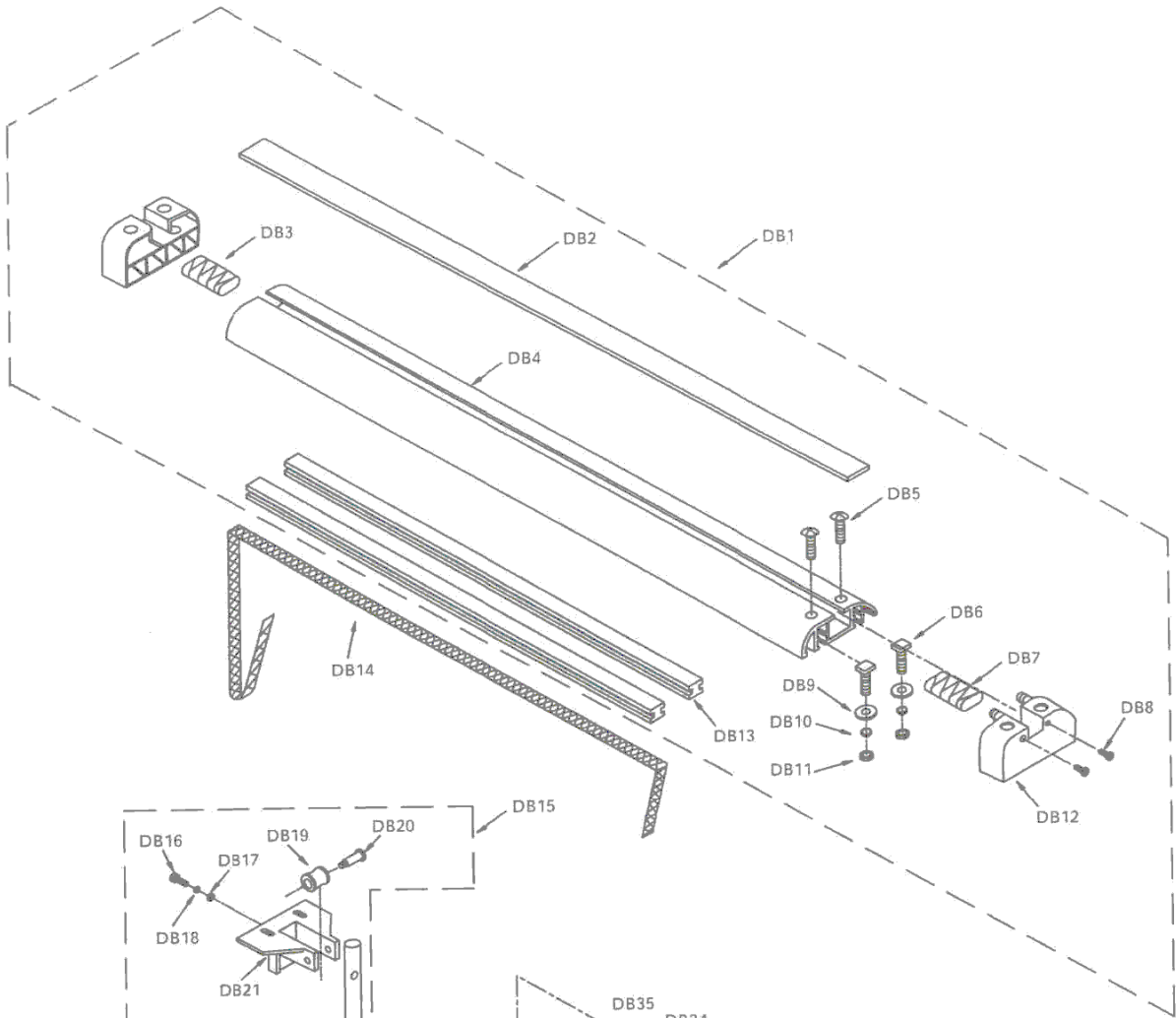
CAUTIONS

1. Before operating the machine, make sure of complete cleanness of the track surface.
2. Safety electric ground wire is used for the sake of safety.

SPECIFICATIONS

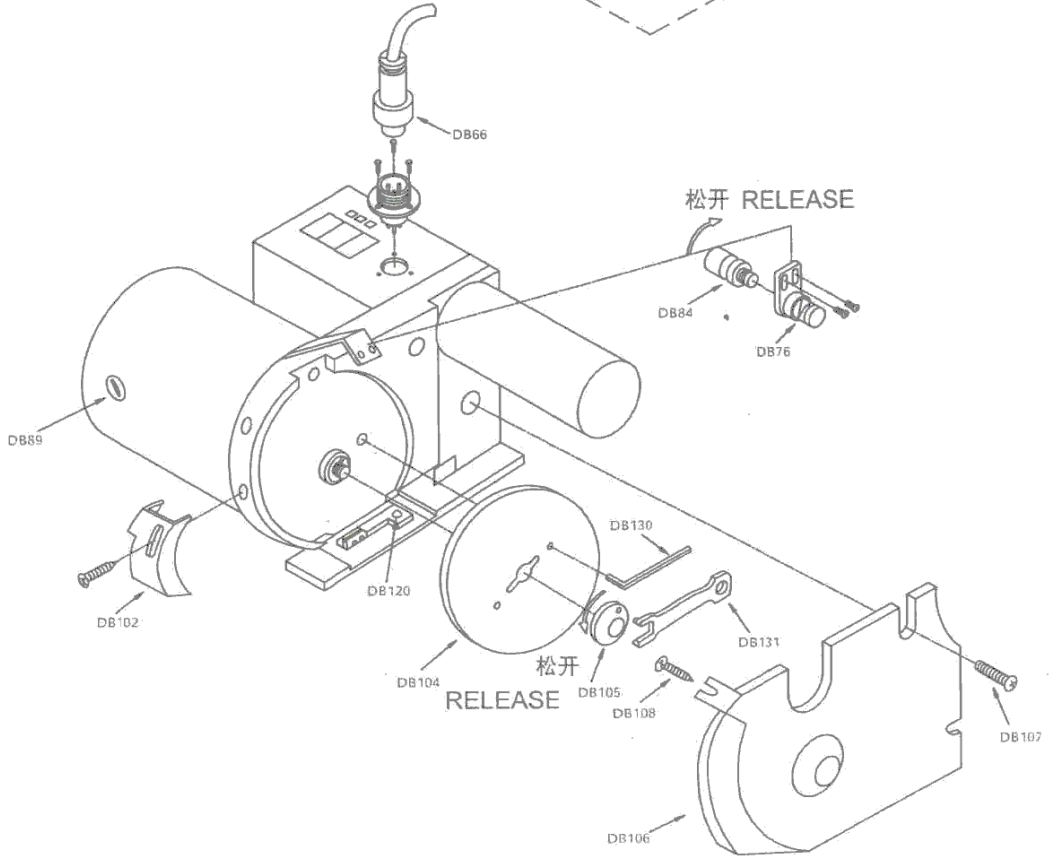
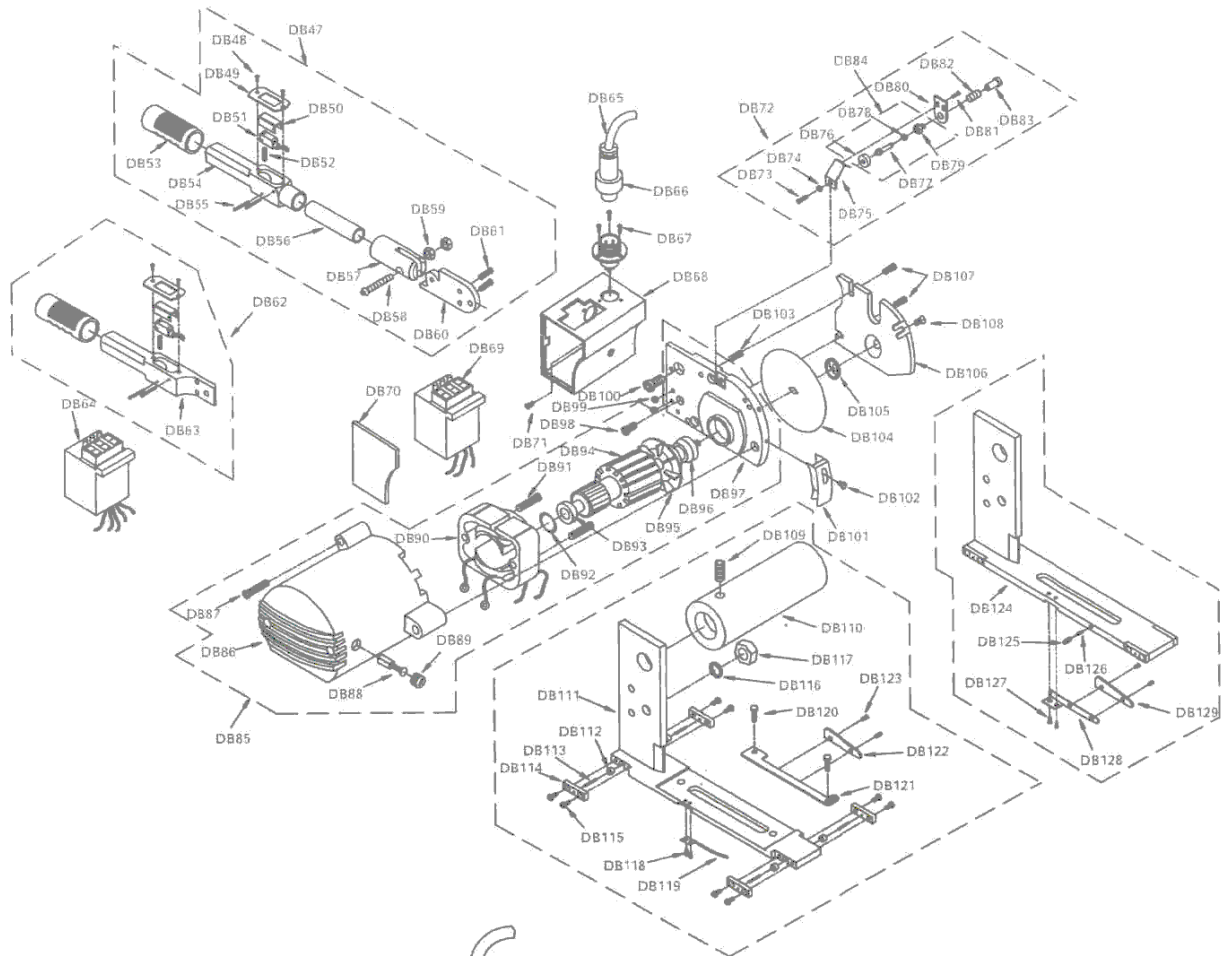
Side of blade	: 108mm
Shape of the blade	: Round
Electric pressure	: Single phase, 240V, 50Hz
Revolving speed of the knife	: 12000r.p.m.
Output	: 130W





Part No.	Description	Qty
DB1	Guide Rail Assembly	1
DB2	Guide Rail Bottom Belt	1
DB3	Return Spring	1
DB4	Guide Rail	1
DB5	Rail Cover Screw	4
DB6	Rail Fixed Screw	4
DB7	Spring	1
DB8	Spring Screw	2
DB9	Spacer	4
DB10	Spring Spacer	4
DB11	Rail Fixed Nut	4
DB12	Guide Rail Cover	2
DB13	Cloth Press Plastic	2
DB14	Lift Belt	1
DB15	Stand Assembly	1
DB16	Press Foot Screw	2
DB17	Spacer	2
DB18	Spring Spacer	2
DB19	Up Guide Wheel	1
DB20	Up Guide Wheel Shaft	1
DB21	Press Foot	2
DB22	Stand	2
DB23	Down Wheel Bracket Assembly	1

Part No.	Description	Qty
DB24	Down Guide Wheel	1
DB25	Down Guide Shaft	1
DB26	Down Guide Shaft Nut	1
DB27	Guide Wheel Bracket	1
DB28	Spacer	1
DB29	Screw	1
DB30	Lift Belt Press Plate	2
DB31	Plate Screw	4
DB32	Stand Guide Wheel	8
DB33	Stand Guide Wheel Shaft	8
DB34	Bearing Spring	8
DB35	Screw	8
DB36	Spacer	8
DB37	Spring Spacer	8
DB38	Nut	8
DB39	Clamp Handle	2
DB40	Handle Press Plate	2
DB41	Stand Guide Wheel Bracket	2
DB42	Extension Spring	3
DB43	Screw	2
DB44	Extension Spring Shaft	1
DB45	Spacer	2
DB46	Nut	1

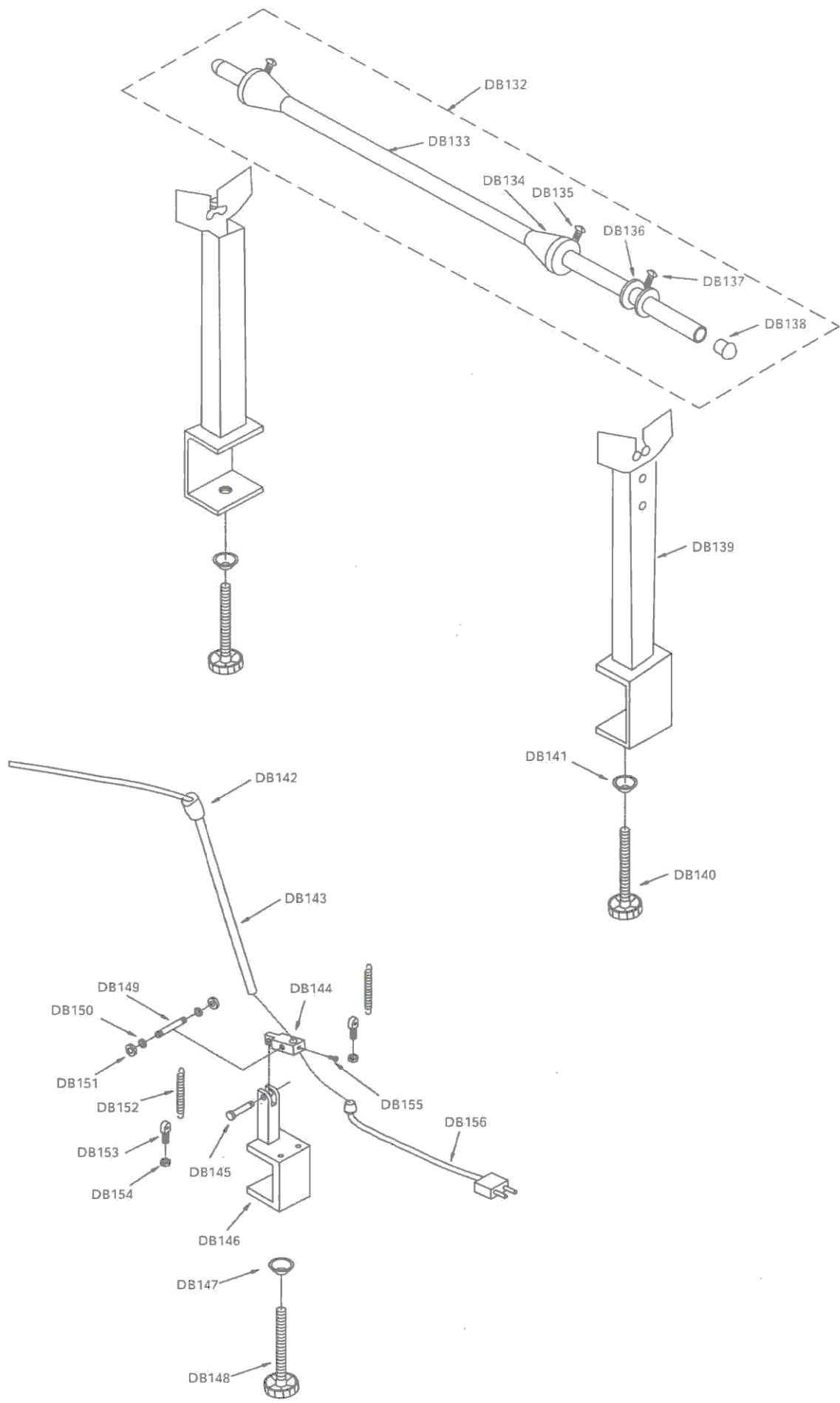


Part No.	Description	Qty
DB47	Long Handle Assembly	1
DB48	Switcher Plate Screw	2
DB49	Switcher Plate	1
DB50	Switcher Cover	1
DB51	Switcher	1
DB52	Spring	1
DB53	Handle Cover	1
DB54	Switcher Cover	1
DB55	Screw	2
DB56	Nut	1
DB57	Handle Connector	1
DB58	Screw	1
DB59	Nut	2
DB60	Handle Connecting Plate	1
DB61	Screw	2
DB62	Short Handle Assembly	1
DB63	Switcher Cover	1
DB64	Delay Counter	1
DB65	Wire Cover	1
DB66	Aviation Plug	1
DB67	Plug Screw	3
DB68	Electric Box	1
DB69	Long Handle Counter	1
DB70	Box Cover	1
DB71	Screw	1
DB72	Grinding Stone Assembly	1
DB73	Stone	1
DB74	Spacer	1
DB75	Grinding Stone Bracket	1
DB76	Stone	1
DB77	Stone Inside Shaft	1
DB78	Stone Bearing	1
DB79	Shaft Tube	1
DB80	Fixed Tube	1
DB81	Screw	2
DB82	Spring	1

Part No.	Description	Qty
DB83	Nut Cover	1
DB84	Grinding Stone Bracket	1
DB85	Motor Assembly	1
DB86	Motor	1
DB87	Screw	3
DB88	Carbon Brush	2
DB89	Carbon Brush Cover	2
DB90	Stator Assembly	1
DB91	Stator Fixed Screw	2
DB92	Wave Washer	1
DB93	Back Bearing	1
DB94	Rotor Assembly	1
DB95	Fan	1
DB96	Front Bearing	1
DB97	Knife Bracket	1
DB98	Screw	1
DB99	Nut	2
DB100	Balance Stand Screw	1
DB101	Knife Head Protector	1
DB102	Screw	1
DB103	Screw	1
DB104	Knife	1
DB105	Knife Fixed Nut	1
DB106	Knife Protector	1
DB107	Screw	2
DB108	Screw	1
DB109	Fixed Screw	1
DB110	Balance Stand	1
DB111	Weight Stay Plate	1
DB112	Roller	4
DB113	Roller Shaft	4
DB114	Roller Press Plate	4
DB115	Screw	8
DB116	Spring Spacer	1
DB117	Nut	1
DB118	Spring Screw	2

Part No.	Description	Qty
DB119	Knife Fixation Spring	1
DB120	Screw	2
DB121	Knife Frame	1
DB122	Knife Fixation	1
DB123	Screw	2
DB124	Weight Stay Plate	1
DB125	Screw	1

Part No.	Description	Qty
DB126	Knife Fixation Spring	1
DB127	Spring Screw	2
DB128	Weight Stay Plate	1
DB129	Knife Fixation	1
DB130	Wrench	1
DB131	Wrench	1



Part No.	Description	Qty
DB132	Stand Shaft Assembly	1
DB133	Stand Shaft	1
DB134	Tube Cover	2
DB135	Screw	2
DB136	Fixer	2
DB137	Screw	2
DB138	Shaft Fixer	2
DB139	Shaft Assembly	2
DB140	Handle	2
DB141	Handle Plate	2
DB142	Wire Tube Cover	2
DB143	Wire Stand	1
DB144	Tube Movable Plate	1

Part No.	Description	Qty
DB145	Screw	1
DB146	Wire Stand	1
DB147	Handle Press Plate	1
DB148	Stand Handle	1
DB149	Spring Bolt	1
DB150	Washer	2
DB151	Nut	2
DB152	Spring	2
DB153	Spring Fixer	2
DB154	Nut	2
DB155	Screw	1
DB156	Wire	1

KONWA®

KONWA INDUSTRIAL SEWING MACHINE (M) SDN BHD (124740-M)

Head Office: Lot 11 & 13, Jalan 51/201, Off Jalan Tandang, Seksyen 51, 46050 Petaling Jaya,
Selangor Darul Ehsan, Malaysia.

Tel: +603-7788 1111

Fax: +603-7788 5555

E-mail: konwa@konwa.com.my URL: www.konwa.com.my