

MODEL : LU-2810-6,2860-6 (Vベルト仕様)

List No : 1652-01

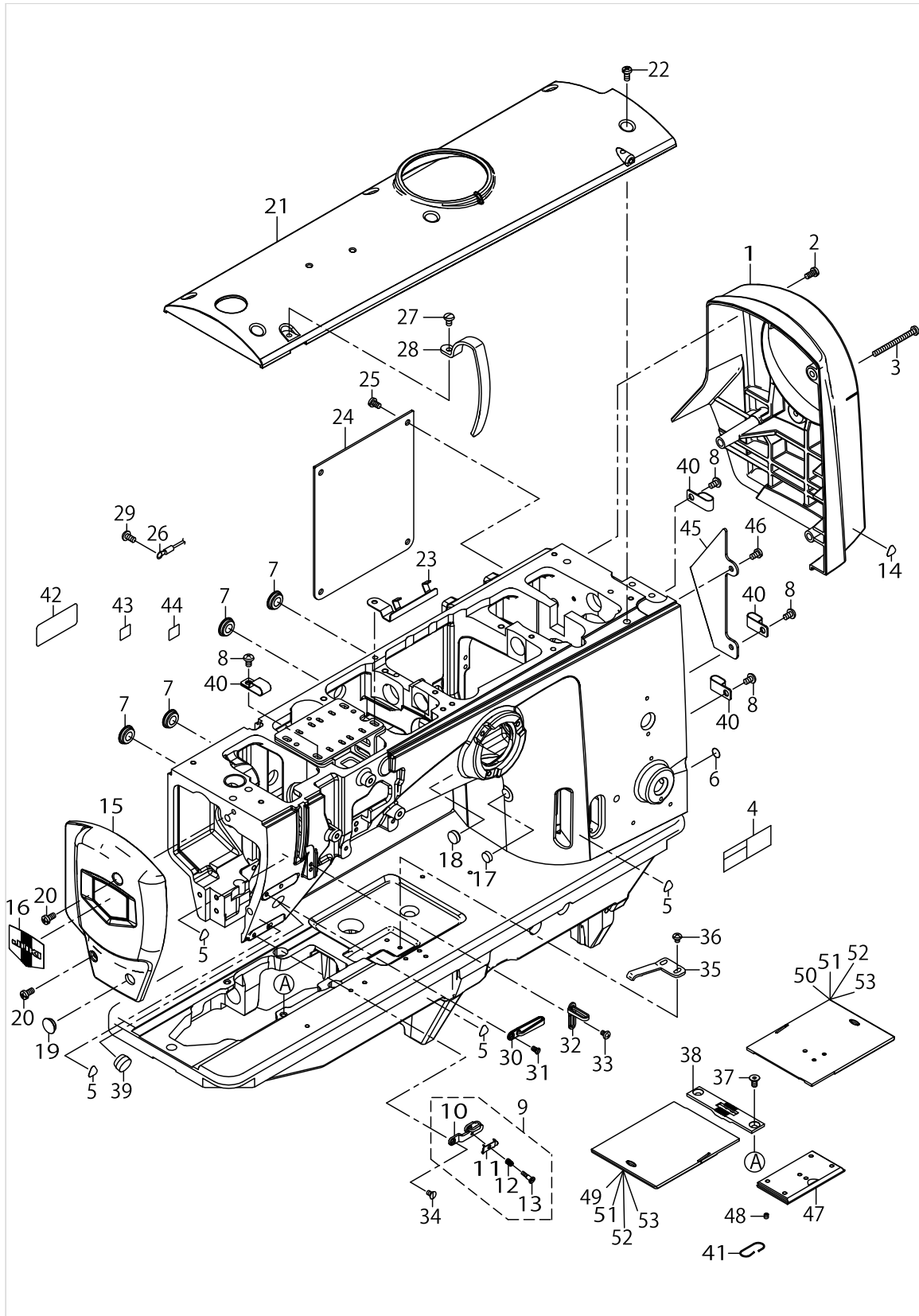
PARTS LIST

Published:02/15/2019

CONTENTS

FRAME & MISCELLANEOUS COVER COMPONENTS	1
MAIN SHAFT & THREAD TAKE-UP LEVER COMPONENTS	5
AUTO BT COMPONENTS	7
6-RANGE SW COMPONENTS.....	9
SPEED ADJUST COMPONENTS	11
THREAD CUTTING COMPONENTS.....	13
TENSION RELEASE COMPONENTS	17
PNEUMATIC COMPONENTS	19
BOTTOM COVER & BELT COVER COMPONENTS.....	21
ACCESSORIES PARTS COMPONENTS	23
LIST FOR INFORMATION OF CHANGE.....	25
HOW TO MAKE USE OF THIS PARTS LIST	26

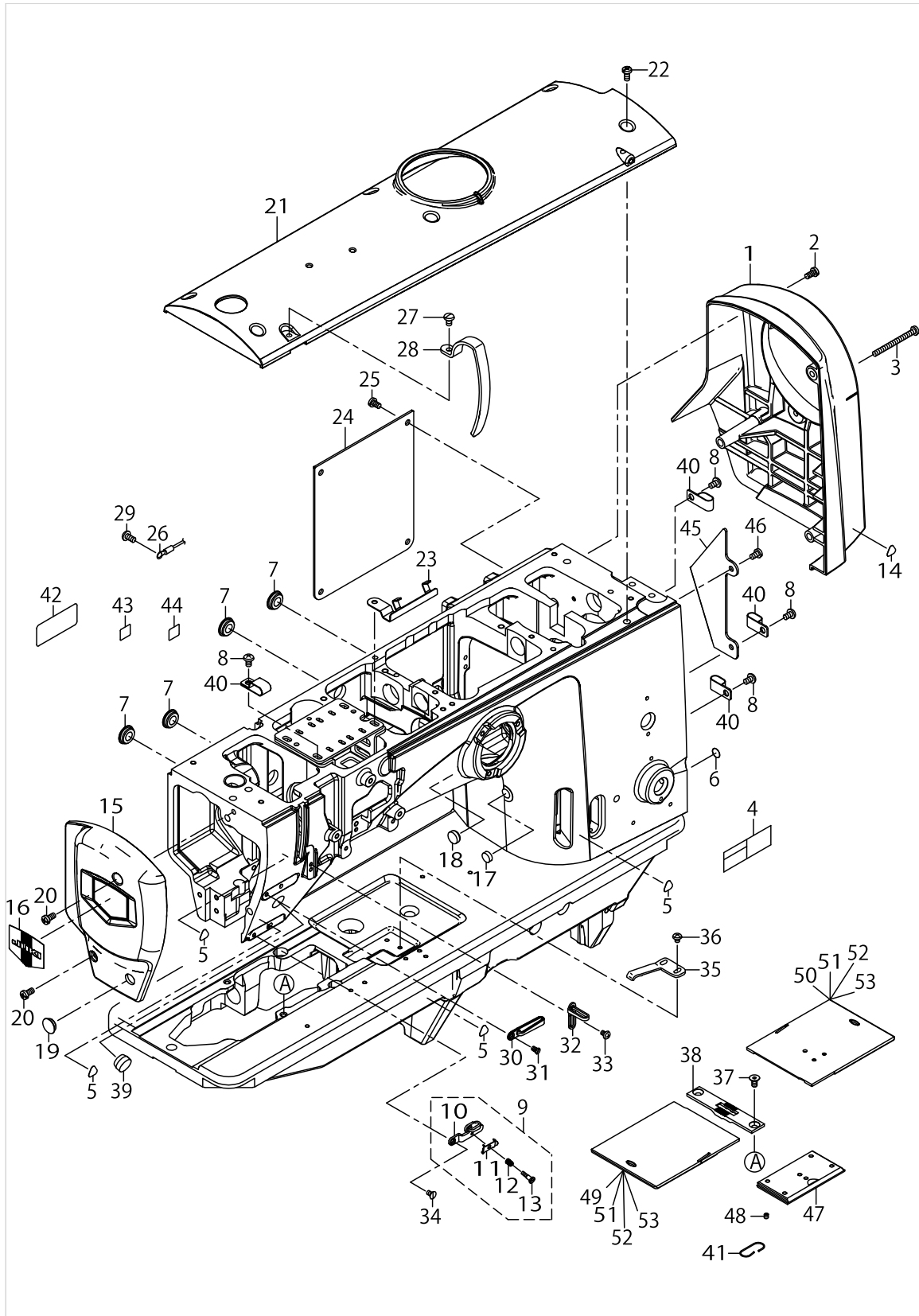
FRAME & MISCELLANEOUS COVER COMPONENTS



FRAME & MISCELLANEOUS COVER COMPONENTS

No.	Parts No.	Parts name	Remarks	Level	Cons	Qty
1	40142336	BELT COVER				1
2	SM4051055SP	SCREW				2
3	SM4055501SC	SCREW M5X0.8 L=55				2
4	40102261	SAFETY_LABEL_S				1
5	CM300200001	ATTENTION SEAL				4
6	22901805	GROUND MARK				1
7	TA1650406R0	PRUG				4
8	SM4050855SP	SCREW				5
9	40034675	THREAD_GUIDE_ASM_E				1
10	40034674	THREAD_GUIDE		*		1
11	40042716	THREAD_PRESSER_PLATE		*		1
12	B1132521000	THREAD PRESSER PLATE SPRING		*		1
13	SD0380556TL	SHOULDER SCREW D=3.8 H=5.5		*		1
14	CM300200001	ATTENTION SEAL				5
15	40130704	FACE_PLATE				1
16	22902506	FACE PLATE				1
17	TA1030402R0	RUBBER PLUG D=10.3 L=4				1
18	TA1270502R0	RUBBER PLUG				1
19	TA1250406R0	RUBBER PLUG D=12.5 L=4				1
20	SM4051055SP	SCREW				2
21	40130706	TOP_COVER				1
22	SM4051055SP	SCREW				6
23	40134805	CABLE HOLDER				1
24	40130703	APERTURE_COVER				1
25	SM4050855SP	SCREW				4
26	40142052	FG CORD ASM				1
27	SM4040855SP	SCREW				1
28	23600505	THREAD TAKE-UP LEVER COVER				1
29	SM4040855SP	SCREW				1
30	40084142	THREAD_GUIDE_LOWER				1
31	SM1040750TP	SCREW M4 L=7				1
32	40126221	THREAD_GUIDE				1
33	SM4040655SP	SCREW M4 L=6				1
34	SM1040750TP	SCREW M4 L=7				1
35	B1111563000	BED SLIDE SPRING				1
36	SM4040655SP	SCREW M4 L=6				2
37	SM1051052TN	PLATE SCREW M5 L=10				2
38	40126349	THROAT_PLATE_2810				1
39	TA1550902R0	PLUG				1
40	D2112555B00	CORD HOLDER LARGE				7
41	B111105100B	SPRING				1
42	40094561	SEWING MACHINE LABEL (EU)				1
43	CM600100101	WEEE MARK LABEL S				1
44	40116677	GOST_SAFTY_LABEL_S				1
45	40142057	BELT COVER B				1
46	SM4050855SP	SCREW				2
47	40112210	SLIDE_PLATE_FRONT				1

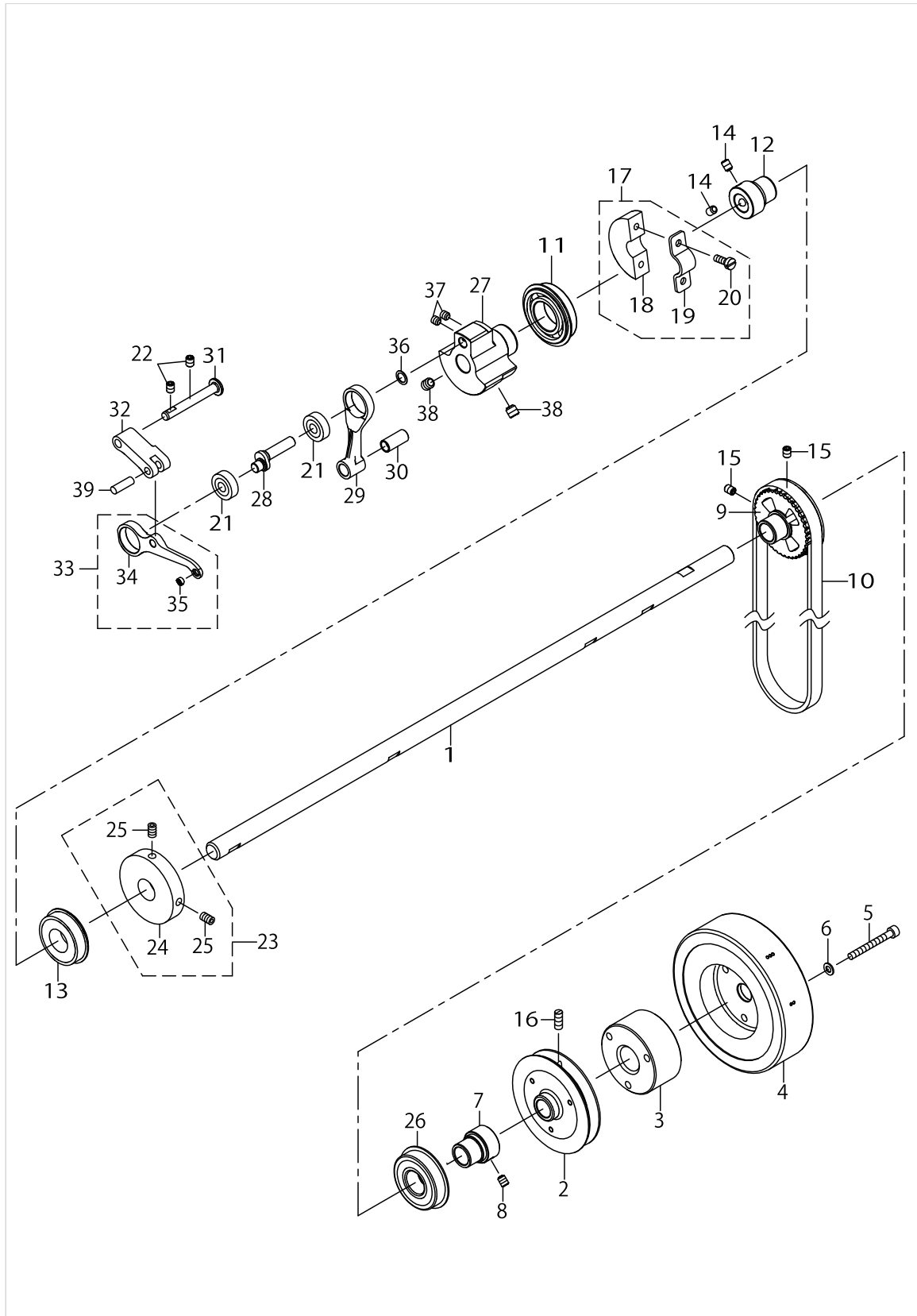
FRAME & MISCELLANEOUS COVER COMPONENTS



FRAME & MISCELLANEOUS COVER COMPONENTS

No.	Parts No.	Parts name	Remarks	Level	Cons	Qty
48	SM8040412TP	SET SCREW M4 L=4				1
49	40112224	SLIDE_PLATE_2810L	FOR LU-2810-6			1
50	40112225	SLIDE_PLATE_2810R	FOR LU-2810-6			1
51	40127056	SLIDE_PLATE_2860R	FOR LU-2860-6 (TYPE S:1/4",5/1-6",3/8") (TYPE A:6mm,8mm,10mm,12mm)			2
52	40112225	SLIDE_PLATE_2810R	FOR LU-2860-6 (TYPE S:1/8",3/16") (TYPE A:4mm)			2
53	40144416	SLIDE_PLATE_2860(14-18MM)	FOR LU-2860-6(TYPE S:1/2")			2

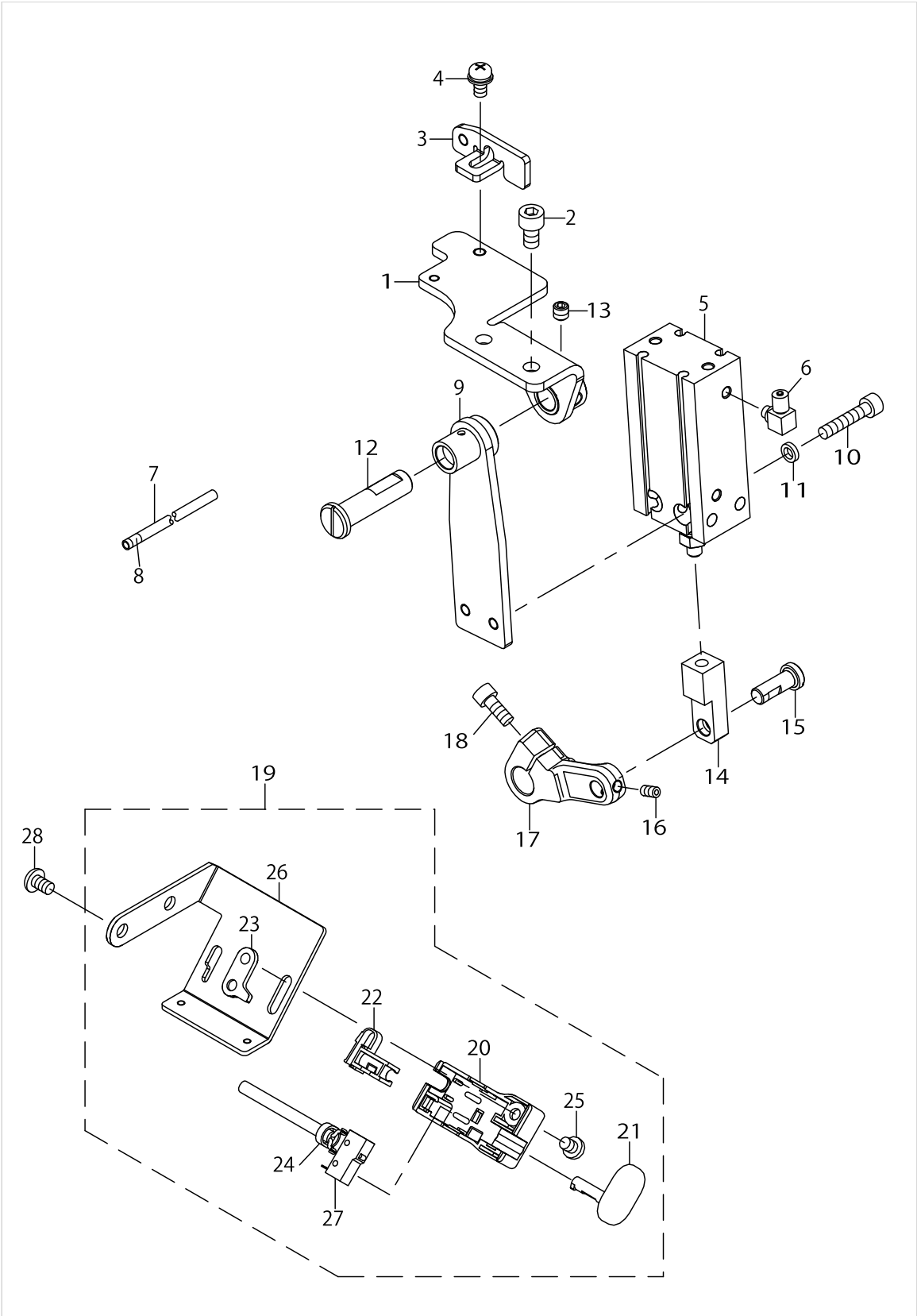
MAIN SHAFT & THREAD TAKE-UP LEVER COMPONENTS



MAIN SHAFT & THREAD TAKE-UP LEVER COMPONENTS

No.	Parts No.	Parts name	Remarks	Level	Cons	Qty
1	40139477	MAIN_SHAFT				1
2	40139478	HAND_WHEEL_A				1
3	40139480	HAND_WHEEL_WASHER				1
4	40139479	HAND_WHEEL				1
5	SM6054502TN	SCREW				3
6	WP0531001SC	WASHER M5				3
7	23605207	MAIN SHAFT BEARING				1
8	SM80608A2TP	SCREW M6 L=8				2
9	40126321	SPROCKET_UPPER				1
10	40112274	TIMING_BELT				1
11	B1203512000	BUSHING				1
12	23605207	MAIN SHAFT BEARING SUPPORT				1
13	SB120001800	BEARING				1
14	SM80608A2TP	SCREW M6 L=8				2
15	SM8060812TP	SCREW M6 L=8				2
16	SS8151550SP	SCREW 15/64-28 L=15				2
17	40010437	CRANK_BALANCER_ASM				1
18	40010438	CRANK_BALANCER		*		1
19	40010439	CRANK_BALANCER_FIX_PLATE		*		1
20	40010440	CRANK_BALANCER_FIX_PLATE_SCREW		*		2
21	SB108001900	BEARING				2
22	SM8060812TP	SCREW M6 L=8				2
23	40010533	BTW_DRIVING_WHEEL_ASM				1
24	40010534	BTW_DRIVING_WHEEL		*		1
25	40010535	DRIVING_WHEEL_SCREW		*		2
26	SB120002700	BEARING				1
27	40112091	COUNTER_WEIGHT				1
28	40112092	NEEDLE_BAR_CRANK				1
29	40112093	NEEDLE_BAR_CRANK_ROD				1
30	40112094	CRANK_ROD_BUSH				1
31	40011902	THREAD_TAKE_UP_CRANK_SHAFT				1
32	40125930	TAKE_UP_LEVER_CRANK				1
33	40127049	THREAD_TAKE_UP_ASM				1
34	40125939	THREAD_TAKE_UP		*		1
35	10546901	BUSH		*		1
36	WP0820516SP	WASHER 11.6X8.2X0.6				1
37	SM8060612TP	SCREW M6 L=6				2
38	SM8080812TP	SCREW M8X8				2
39	10721504	FEED ADJUSTING PIN				1

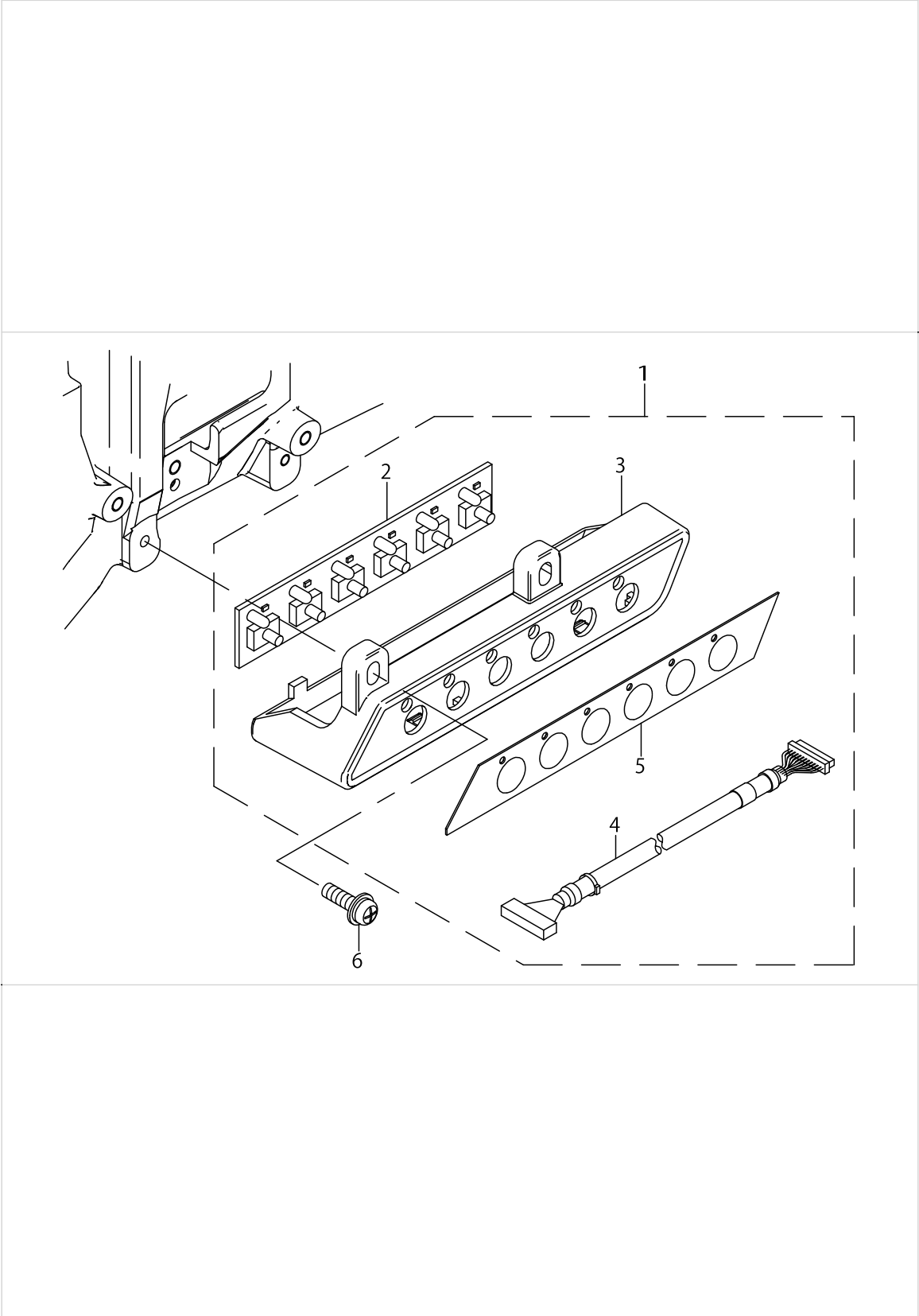
AUTO BT COMPONENTS



AUTO BT COMPONENTS

No.	Parts No.	Parts name	Remarks	Level	Cons	Qty
1	40142041	CYLINDER_BASE_ASM.				1
2	SM6061002TP	SCREW M6 L=10				2
3	40112228	MOTOR_COVER_FITTING_PLATE				1
4	SL4051091SC	SCREW M5 L=10				1
5	PA2004004A0	FREE MOUNT CYLINDER				1
6	PJ046052503	HOSE ELBOW				1
7	BT0400251EB	URETHANE TUBE BLACK 4X2.5				0.9
8	18035709	WIRE MARK (8)				1
9	40142040	CYLINDER_FITTING_PLATE_ASM.				1
10	SM6052502TN	SCREW				2
11	13441001	SPACER_2				2
12	40006716	THREAD_TRIMMER_SHAFT				1
13	SM8060612TP	SCREW M6 L=6				2
14	40139485	FEED_ADJUSTING_LINK_ROD				1
15	40139486	FEED_ADJUSTING_LINK_SHAFT				1
16	SM8050612TP	SCREW M5X6				2
17	40131592	FEED_ADJUSTING_LINK_ARM				1
18	SM6051202TP	SCREW M5X0.8 L=12				1
19	40142048	TB_SW_ASSY				1
20	23631708	REVERSE FEED SWITCH COVER		*		1
21	23631807	REVERSE FEED SWITCH SHAFT		*		1
22	23631906	REVERSE FEED SWITCH SUPPORT		*		1
23	23632102	REVERSE FEED SWITCH BASE GUIDE		*		1
24	EA9500B0100	CABLE BAND		*		1
25	SS7110740TP	SCREW 11/64-40 L=7		*		1
26	40112213	TB_SW_MOUNTING_PLATE		*		1
27	40142049	REVERSE_FEED_CORD_ASM		*		1
28	SM4050855SP	SCREW				2

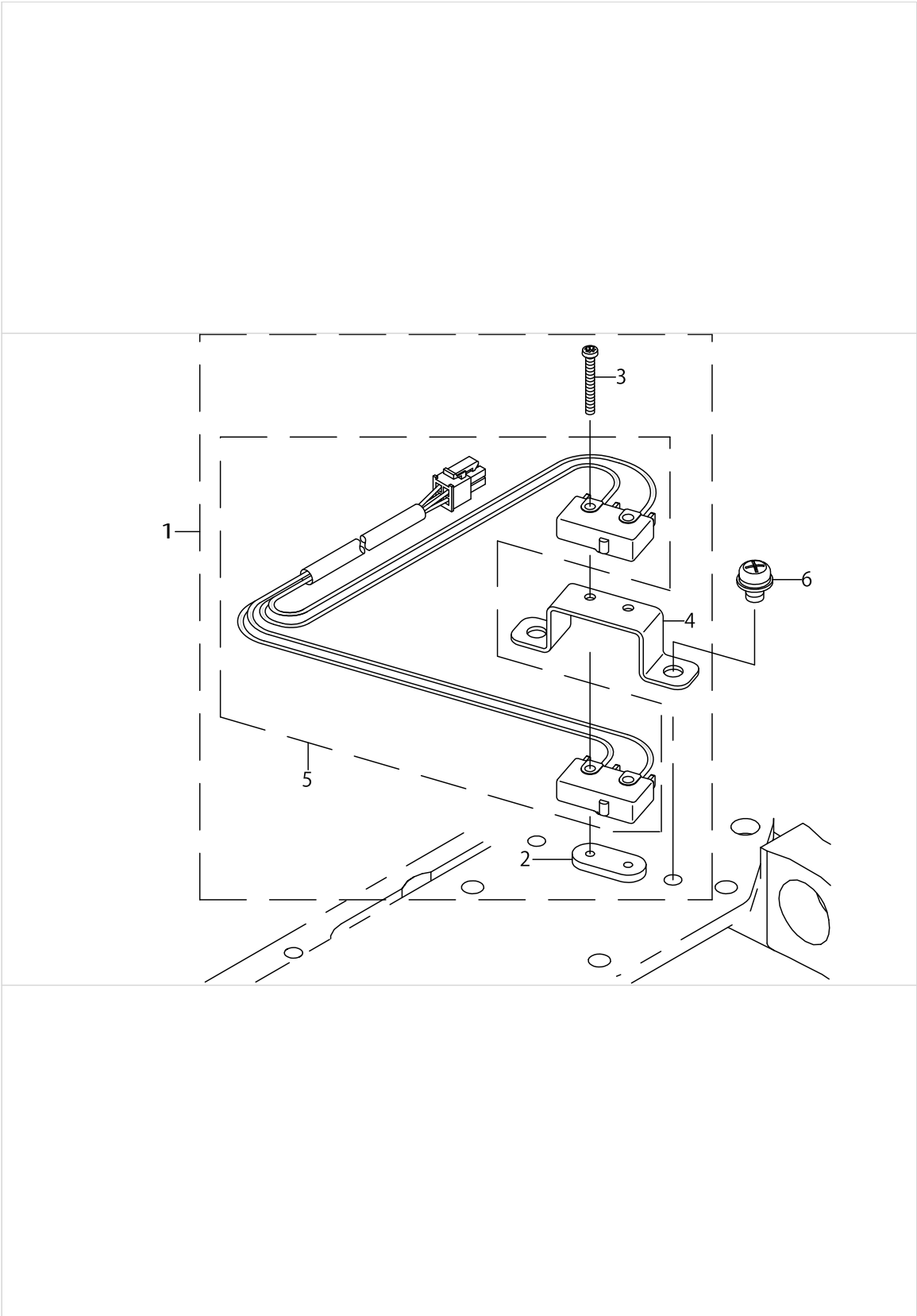
6-RANGE SW COMPONENTS



6-RANGE SW COMPONENTS

No.	Parts No.	Parts name	Remarks	Level	Cons	Qty
1	40142064	6RANGE SWITCH ASM				1
2	40105510	6RANGE SWITCH PCB ASSY		*		1
3	40112215	6RANGE_SWITCH_COVER		*		1
4	40142054	6RANGE SWITCH CABLE ASM		*		1
5	40112216	PANEL SHEET		*		1
6	SL4041491SC	SCREW M4 L=14				2

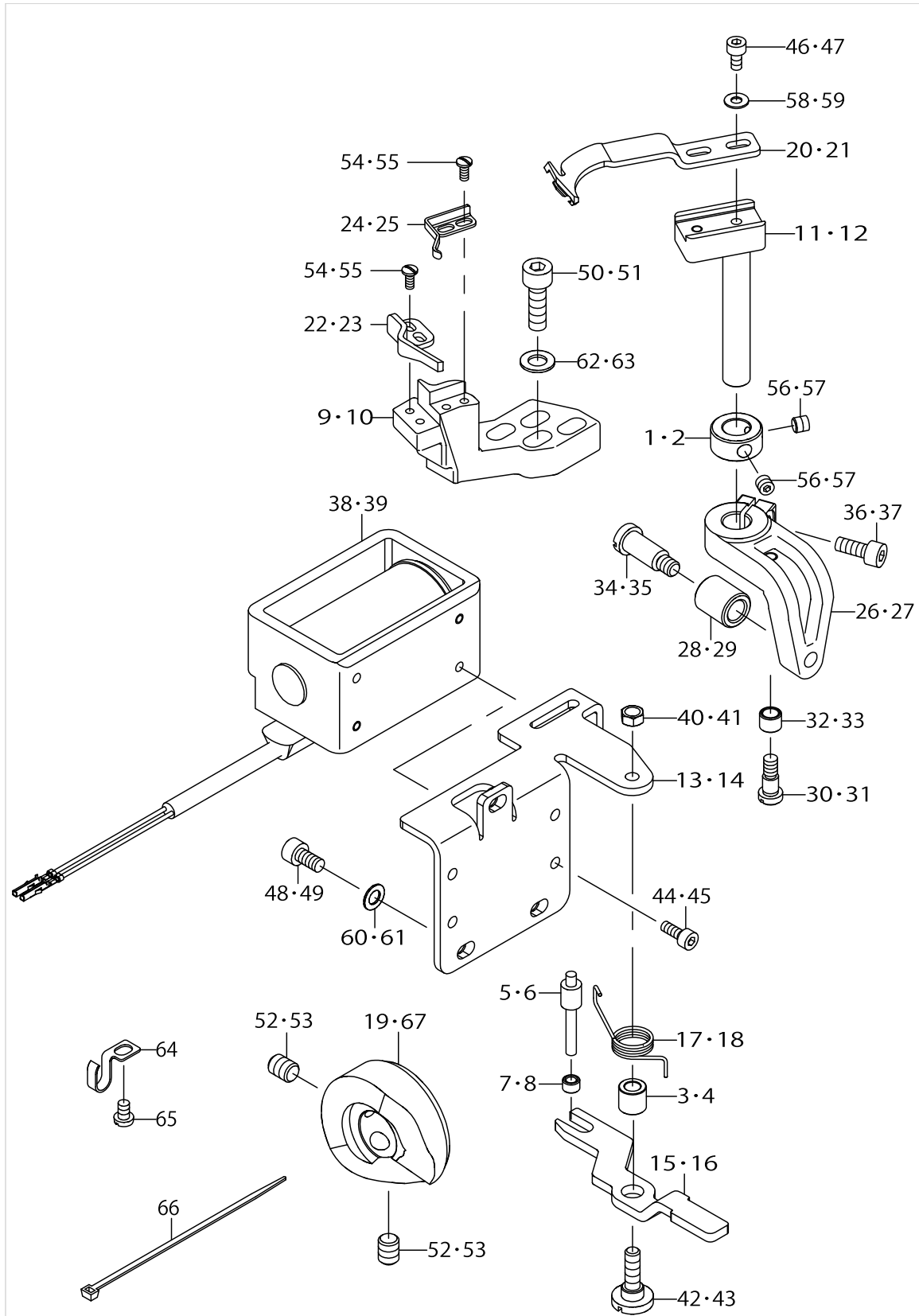
SPEED ADJUST COMPONENTS



SPEED ADJUST COMPONENTS

No.	Parts No.	Parts name	Remarks	Level	Cons	Qty
1	40142065	VERTICAL_DETECTOR_SWITCH_ASM				1
2	23638406	SAFETY SWITCH NUT		*		1
3	SM4021601SN	SCREW M2 L=16		*		2
4	40126259	SENSOR_BRACKET		*		1
5	40142053	SPEED CONTRL CORD ASM		*		1
6	SL4040691SC	SCREW M4 L=6				2

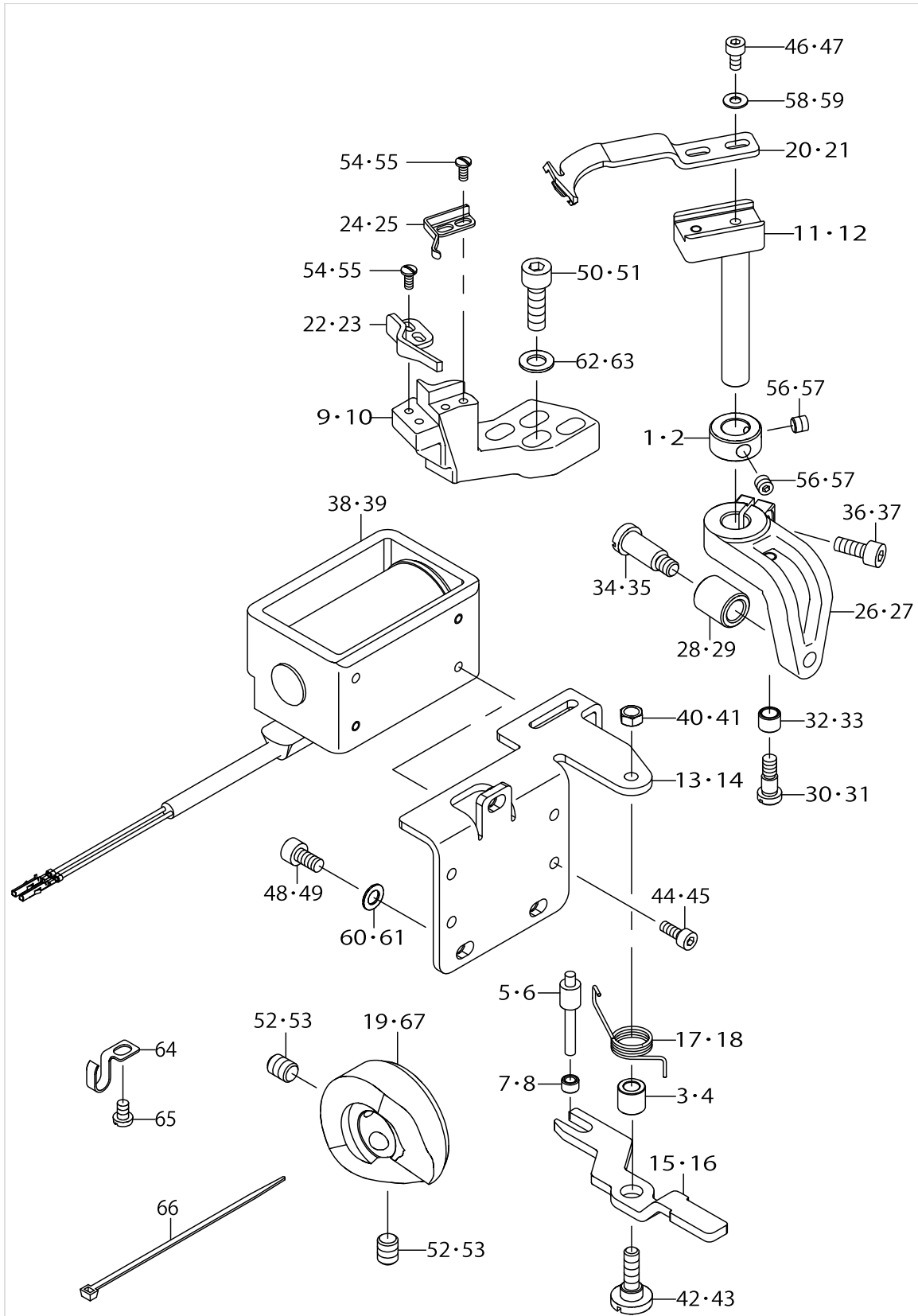
THREAD CUTTING COMPONENTS



THREAD CUTTING COMPONENTS

No.	Parts No.	Parts name	Remarks	Level	Cons	Qty
1	22917009	THRUST COLLAR	FOR LU-2810-6			1
2	22917009	THRUST COLLAR	FOR LU-2860-6			2
3	22956205	WIPER HINGE SCREW COLLAR	FOR LU-2810-6			1
4	22956205	WIPER HINGE SCREW COLLAR	FOR LU-2860-6			2
5	22957104	WIPER SOLENOID SHAFT	FOR LU-2810-6			1
6	22957104	WIPER SOLENOID SHAFT	FOR LU-2860-6			2
7	22957203	WIPER LINK COLLAR	FOR LU-2810-6			1
8	22957203	WIPER LINK COLLAR	FOR LU-2860-6			2
9	40125879	FIXED_KNIFE_BASE	FOR LU-2810-6			1
10	40125879	FIXED_KNIFE_BASE	FOR LU-2860-6			2
11	40112230	MOVING_KNIFE_SHAFT	FOR LU-2810-6			1
12	40112230	MOVING_KNIFE_SHAFT	FOR LU-2860-6			2
13	40112233	THREAD_TRIMMER_SOL_BASE_PLATE	FOR LU-2810-6			1
14	40112233	THREAD_TRIMMER_SOL_BASE_PLATE	FOR LU-2860-6			2
15	40112234	KNIFE_DRIVING_ARM_LINK	FOR LU-2810-6			1
16	40112234	KNIFE_DRIVING_ARM_LINK	FOR LU-2860-6			2
17	40112235	DRIVING_ARM_RETURN_SPRING	FOR LU-2810-6			1
18	40112235	DRIVING_ARM_RETURN_SPRING	FOR LU-2860-6			2
19	40112278	THREAD_TRIMMER_CAM_R				1
20	21389200	MOVING KNIFE	FOR LU-2810-6			1
21	40132434	MOVING KNIFE	FOR LU-2860-6			2
22	21389309	FIXED KNIFE	FOR LU-2810-6			1
23	21389309	FIXED KNIFE	FOR LU-2860-6			2
24	21389408	CLAMP SPRING	FOR LU-2810-6			1
25	21389408	CLAMP SPRING	FOR LU-2860-6			2
26	40123248	MOVING_KNIFE_DRIVING_ARM	FOR LU-2810-6			1
27	40123248	MOVING_KNIFE_DRIVING_ARM	FOR LU-2860-6			2
28	40112232	THREAD_TRIMMER_CAM_ROLLER	FOR LU-2810-6			1
29	40112232	THREAD_TRIMMER_CAM_ROLLER	FOR LU-2860-6			2
30	SD0460576TP	SHOULDER SCREW D=4.6 H=5.7	FOR LU-2810-6			1
31	SD0460576TP	SHOULDER SCREW D=4.6 H=5.7	FOR LU-2860-6			2
32	B2508047000	BLOCK ROLLER	FOR LU-2810-6			1
33	B2508047000	BLOCK ROLLER	FOR LU-2860-6			2
34	SD0651301TH	HINGE SCREW D=6.5 H=13	FOR LU-2810-6			1
35	SD0651301TH	HINGE SCREW D=6.5 H=13	FOR LU-2860-6			2
36	SM6041002TP	SCREW M4 L=10	FOR LU-2810-6			1
37	SM6041002TP	SCREW M4 L=10	FOR LU-2860-6			2
38	40142050	THREAD_TRIMMER_SOLENOID	FOR LU-2810-6			1
39	40142050	THREAD_TRIMMER_SOLENOID	FOR LU-2860-6			2
40	NS6110310SP	NUT 11/64-40	FOR LU-2810-6			1
41	NS6110310SP	NUT 11/64-40	FOR LU-2860-6			2
42	SD0650321TP	HINGE SCREW D=6.5 H=3.2	FOR LU-2810-6			1
43	SD0650321TP	HINGE SCREW D=6.5 H=3.2	FOR LU-2860-6			2
44	SM6030602TP	SCREW M3X0.5 L=6	FOR LU-2810-6			4
45	SM6030602TP	SCREW M3X0.5 L=6	FOR LU-2860-6			8
46	SM6030602TP	SCREW M3X0.5 L=6	FOR LU-2810-6			2
47	SM6030602TP	SCREW M3X0.5 L=6	FOR LU-2860-6			4

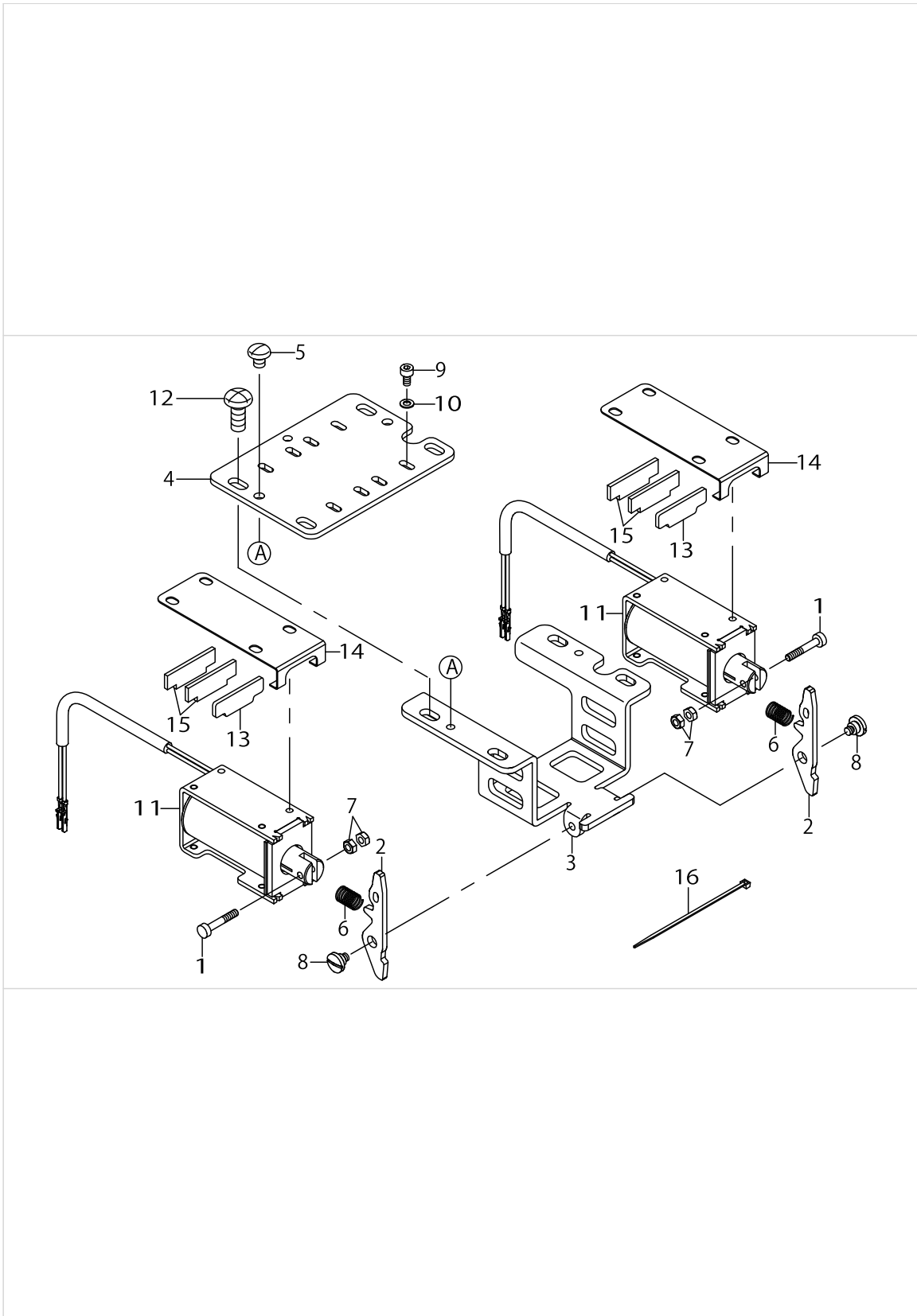
THREAD CUTTING COMPONENTS



THREAD CUTTING COMPONENTS

No.	Parts No.	Parts name	Remarks	Level	Cons	Qty
48	SM6040802TP	SCREW M4X0.7 L=8	FOR LU-2810-6			3
49	SM6040802TP	SCREW M4X0.7 L=8	FOR LU-2860-6			6
50	SM6051602TP	SCREW M5X0.8 L=16	FOR LU-2810-6			2
51	SM6051602TP	SCREW M5X0.8 L=16	FOR LU-2860-6			4
52	SM8060812TP	SCREW M6 L=8	FOR LU-2810-6			2
53	SM8060812TP	SCREW M6 L=8	FOR LU-2860-6			4
54	SS7060610SP	SCREW 3/32-56 L=5.5	FOR LU-2810-6			4
55	SS7060610SP	SCREW 3/32-56 L=5.5	FOR LU-2860-6			8
56	SS8110422TP	SCREW 11/64-40 L=4	FOR LU-2810-6			2
57	SS8110422TP	SCREW 11/64-40 L=4	FOR LU-2860-6			4
58	WP0320501SC	WASHER M3	FOR LU-2810-6			2
59	WP0320501SC	WASHER M3	FOR LU-2860-6			4
60	WP0450000SD	WASHER 4.5X8X0.5	FOR LU-2810-6			3
61	WP0450000SD	WASHER 4.5X8X0.5	FOR LU-2860-6			6
62	WP0550800SP	WASHER 5.5X10X0.8	FOR LU-2810-6			2
63	WP0550800SP	WASHER 5.5X10X0.8	FOR LU-2860-6			4
64	26231902	OIL WICK PIPE STOPPER				1
65	SM4040655SP	SCREW M4 L=6				1
66	EA9500B0100	CABLE BAND				1
67	40126546	THREAD_TRIMMER_CAM_LEFT	FOR LU-2860-6			1

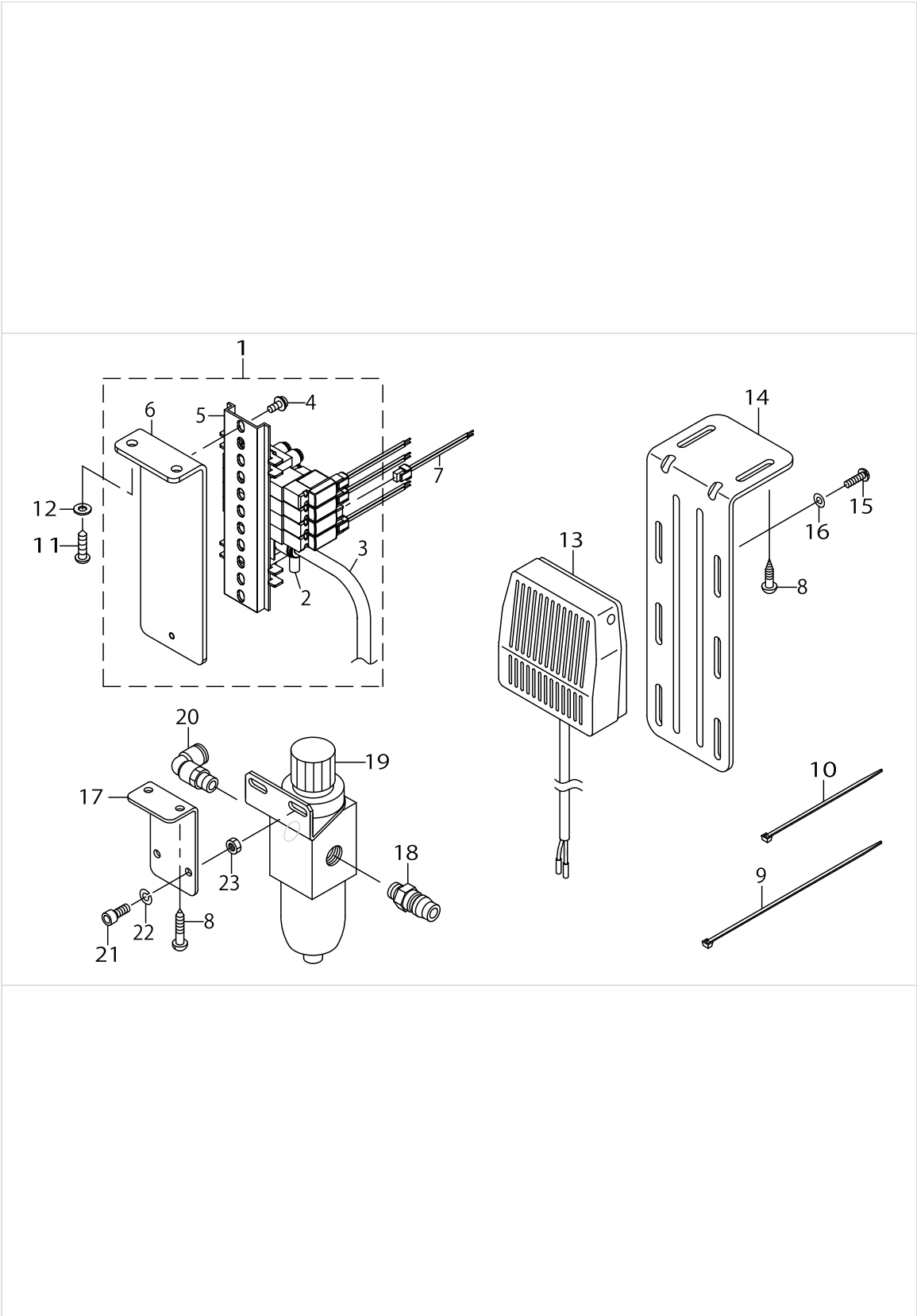
TENSION RELEASE COMPONENTS



TENSION RELEASE COMPONENTS

No.	Parts No.	Parts name	Remarks	Level	Cons	Qty
1	23542418	CLUTCH LINK PIN				2
2	40125948	RELEASE_SOLENOID_LINK				2
3	40126263	SOLENOID_LINK_MOUNTING_PLATE				1
4	40125949	RELEASE_SOLENOID_BASE				1
5	SS4090515SP	SCREW 9/64-40 L=5				2
6	32055501	AT (UPPER) SPRING				2
7	NM6030001SC	NUT M3X0.5 TYPE1				4
8	SD0550271TP	HINGE SCREW D=5.50 H=2.7				2
9	SM6030602TP	SCREW M3X0.5 L=6				8
10	WP0320501SE	WASHER 3.2X7.0X0.5				8
11	40142051	TENSION_RELEASE_SOLENOID				2
12	SM4051255SP	SCREW M5 L=12				4
13	40126563	STOPPER_PLATE				2
14	40126562	RUBBER HOLDER				2
15	40086679	WIPER_STOPPER_RUBBER				4
16	EA9500B0100	CABLE BAND				1

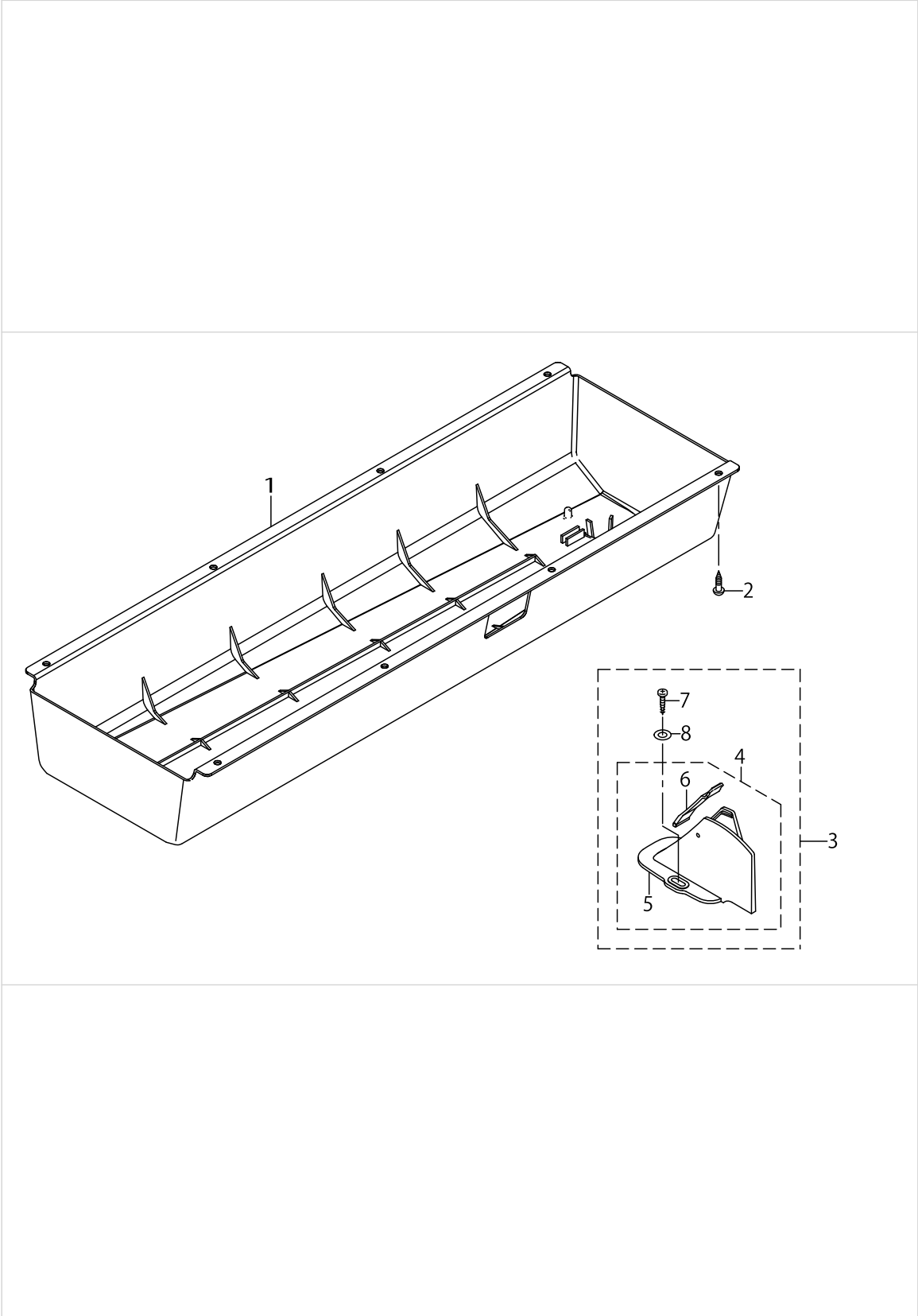
PNEUMATIC COMPONENTS



PNEUMATIC COMPONENTS

No.	Parts No.	Parts name	Remarks	Level	Cons	Qty
1	40142056	SOLENOID_VALVE_FITTING_BASE_ASM				1
2	BT0600401EB	URETHANE TUBE BLACK 6X4		*		1.1
3	BT0800501EB	URETHANE TUBE BLACK 8X5		*		1.1
4	SL4041091SC	SCREW M4 L=10		*		2
5	40126545	SOLENOID_VALVE_ASSY		*		1
6	40030950	SOLENOID_VALVE_FITTING_BASE		*		1
7	40126128	SOLENOID VALVE CABLE ASM				1
8	SK3482001SE	WOOD SCREW D=4.8 L=20				4
9	EA9500B0200	CABLE BAND				3
10	EA9500B0100	CABLE BAND				2
11	SK3512001SE	WOOD SCREW D=5.1 L=20				2
12	WP0501016SD	WASHER 5X10.5X1				2
13	40105518	KNEE SW ASM				1
14	40126266	KNEE_SWITCH_BASE_PLATE				1
15	ST4041451SN	SCREW				2
16	WP0430801SC	WASHER M4				2
17	13860408	REGULATOR BRACKET				1
18	PJ025100003	PLUG				1
19	PF055107000	FILTER REGULATOR				1
20	PJ304065101	ELBOW UNION 6XPT1/8				1
21	SM6051202TP	SCREW M5X0.8 L=12				2
22	WS0510002KN	SPRING WASHER M5				2
23	NM6050001SP	NUT M5X0.8 TYPE1				2

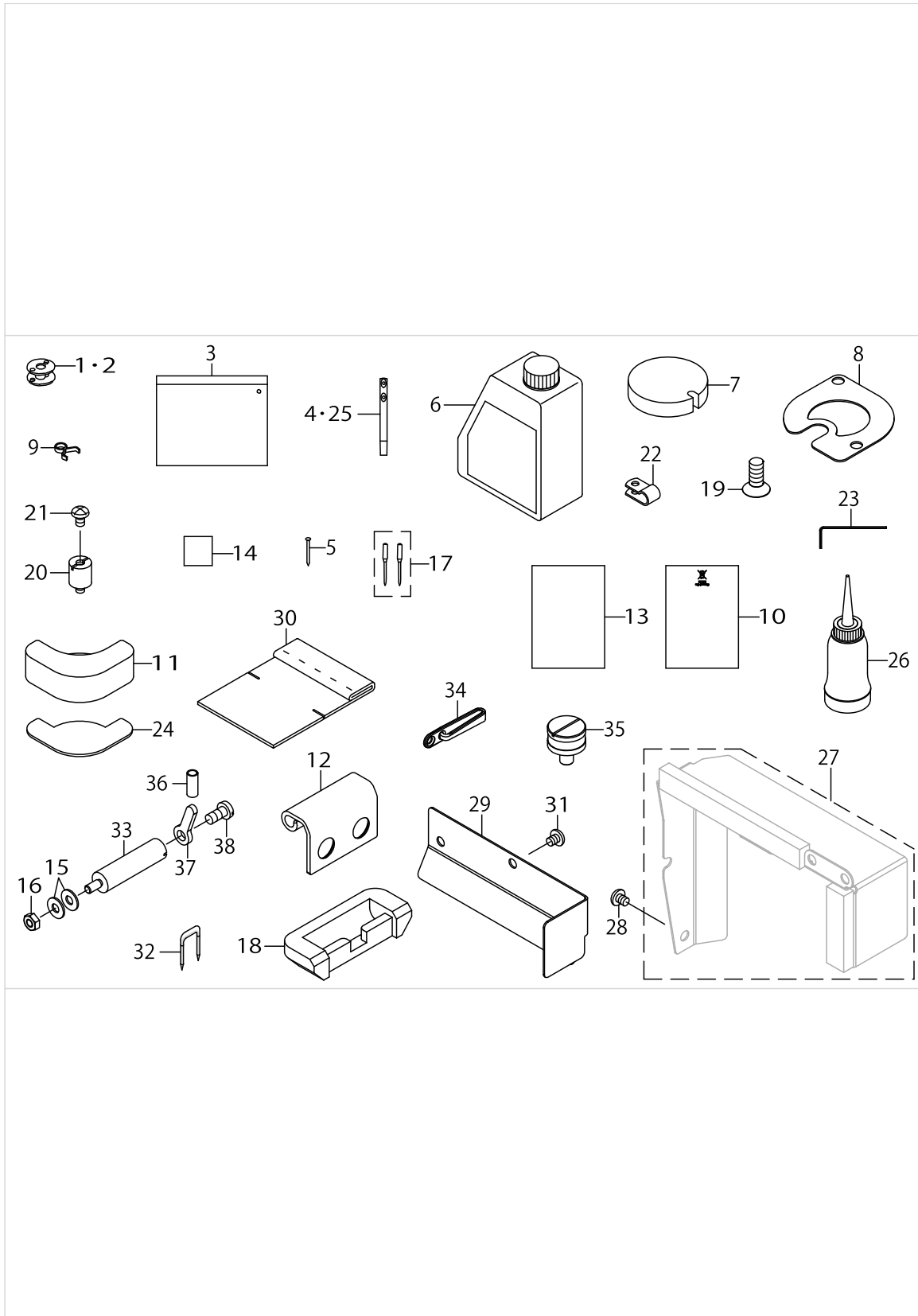
BOTTOM COVER & BELT COVER COMPONENTS



BOTTOM COVER & BELT COVER COMPONENTS

No.	Parts No.	Parts name	Remarks	Level	Cons	Qty
1	40126155	OIL_PAN				1
2	SK3482001SE	WOOD SCREW D=4.8 L=20				8
3	40126560	ASSY_BELT_COVER_B2				1
4	40112296	BELT_COVER_B_COMPL.		*		1
5	40112314	BELT_COVER_B		*		1
6	40112313	BELT_COVER_B_LID_ASM.		*		1
7	SK3412000SC	WOOD SCREW D=4.1 L=20		*		2
8	WP0501016SD	WASHER 5X10.5X1		*		2

ACCESSORIES PARTS COMPONENTS



ACCESSORIES PARTS COMPONENTS

No.	Parts No.	Parts name	Remarks	Level	Cons	Qty
1	21334800	ALUMINUM BOBBIN WITH KNURL				1
2	21334800	ALUMINUM BOBBIN WITH KNURL	FOR LU-2860-6			2
3	21413158	ACCESSORY BAG ASM.				1
4	22958300	NEEDLE THREAD GUIDE PIN	FOR LU-2810-6			1
5	22926208	NAIL				16
6	40102087	JUKI_MACHINE_OIL_7				1
7	40126405	OIL_FILTER				1
8	40126267	FELT HOLDER				1
9	23629306	PIPE STOPPER A				2
10	CM600100201	WEEE INFORMATION SHEET	FOR JE			1
11	40126152	CUSHION_RUBBER				2
12	40125869	HINGE				2
13	40142430	DECLARATION OF INCORPORATION (LU2800)	FOR JE			1
14	40193158	LU2800 SAFETY NOTES				1
15	WP0551016SH	WASHER 5.5X13X1				2
16	NM6050001SP	NUT M5X0.8 TYPE1				1
17	M13517B1602	NEEDLE 135X17 #160-2				1
18	22926000	RUBBER CUSHION				2
19	B1516210D00	SCREW				4
20	40126222	CP_SPACER				2
21	SM4050855SP	SCREW				2
22	HX00150000B	CABLE CLIP				2
23	40079298	WRENCH				1
24	10740900	RUBBER	FOR LU-2860-6			3
25	22958300	NEEDLE THREAD GUIDE PIN	FOR LU-2860-6			2
26	B91210120A0	OILER ASM.				1
27	40131916	OIL_SHIELD_PLATE_ASSY	FOR LU-2810-6			1
28	SM4050655SP	SCREW M5 L=6	FOR LU-2810-6			4
29	40131580	OIL_SHIELD_PLATE	FOR LU-2860-6			1
30	40133730	OIL FILTER				1
31	SM4050655SP	SCREW M5 L=6	FOR LU-2860-6			2
32	MAO11532000	CORD STAPLE				3
33	40142037	SYNCHRONIZER_HOLD_STUD				1
34	40084142	THREAD_GUIDE_LOWER				1
35	22622401	SYNCRO FRNGE				1
36	BT0630520Z0	INSULATED TUBE 6.3X5.2				0.015
37	40142036	SYNCHRONIZER_HOLD_PLATE				1
38	SM4061255SP	SCREW M6 L=12				1

HOW TO MAKE USE OF THIS PARTS LIST

1.Explanation of codes

1)"*"mark.....means this part is changed from the previous parts book.

As to the details of the change, refer to the "List for information of change".

2)"#01".....refer to "Note" explanation at bottom of page.

2.Codes on the "Qty" column

• Each numeral indicates the number of parts required.

• "0.1" and "2.5" indicate the length (in meters) of the respective parts.

3.Parentheses mean that the corresponding part is a subpart that constructs an assembly part.

4.Dotted lines on the Figures indicate assembly parts.

1."注記"欄の記号説明

1) "*"印.....前回のパーツブックに比較して今回変更された部品を意味します。

変更内容は、"変更情報リスト"を参照してください。

2) "#01".....ページ下の"注記"の説明を参照してください。

2.数量欄の数字は、個数を表し、0.1、2.5等の数値は、長さ（単位メートル）を表します。

3.数量欄の（ ）は、組部品を構成している子部品であることを意味します。

4.イラストページの-----枠は、組構成であることを意味します。

Illustration of this parts list is based on the model LZH-1290-7

このパーツリストは、LZH-1290-7を基本にイラストを作成してあります。

NUMERICAL INDEX OF PARTS

PART NO	PAGE	REF NO.	PART NO	PAGE	REF NO.	PART NO	PAGE	REF NO.
10546901	6	35	40079298	24	23	40126266	20	14
10721504	6	39	40084142	2	30	40126267	24	8
10740900	24	24	40084142	24	34	40126321	6	9
13441001	8	11	40086679	18	15	40126349	2	38
13860408	20	17	40094561	2	42	40126405	24	7
18035709	8	8	40102087	24	6	40126545	20	5
21334800	24	1·2	40102261	2	4	40126546	16	19·67
21389200	14	20·21	40105510	10	2	40126560	22	3
21389309	14	22·23	40105518	20	13	40126562	18	14
21389408	14	24·25	40112091	6	27	40126563	18	13
21413158	24	3	40112092	6	28	40127049	6	33
22622401	24	35	40112093	6	29	40127056	4	51
22901805	2	6	40112094	6	30	40130703	2	24
22902506	2	16	40112210	2	47	40130704	2	15
22917009	14	1·2	40112213	8	26	40130706	2	21
22926000	24	18	40112215	10	3	40131580	24	29
22926208	24	5	40112216	10	5	40131592	8	17
22956205	14	3·4	40112224	4	49	40131916	24	27
22957104	14	5·6	40112225	4	52	40132434	14	20·21
22957203	14	7·8	40112228	8	3	40133730	24	30
22958300	24	4·25	40112230	14	11·12	40134805	2	23
23542418	18	1	40112232	14	28·29	40139477	6	1
23600505	2	28	40112233	14	13·14	40139478	6	2
23605207	6	12	40112234	14	15·16	40139479	6	4
23629306	24	9	40112235	14	17·18	40139480	6	3
23631708	8	20	40112274	6	10	40139485	8	14
23631807	8	21	40112278	14	19·67	40139486	8	15
23631906	8	22	40112296	22	4	40142036	24	37
23632102	8	23	40112313	22	6	40142037	24	33
23638406	12	2	40112314	22	5	40142040	8	9
26231902	16	64	40116677	2	44	40142041	8	1
32055501	18	6	40123248	14	26·27	40142048	8	19
40006716	8	12	40125869	24	12	40142049	8	27
40010437	6	17	40125879	14	9·10	40142050	14	38·39
40010438	6	18	40125930	6	32	40142051	18	11
40010439	6	19	40125939	6	34	40142052	2	26
40010440	6	20	40125948	18	2	40142053	12	5
40010533	6	23	40125949	18	4	40142054	10	4
40010534	6	24	40126128	20	7	40142056	20	1
40010535	6	25	40126152	24	11	40142057	2	45
40011902	6	31	40126155	22	1	40142064	10	1
40030950	20	6	40126221	2	32	40142065	12	1
40034674	2	10	40126222	24	20	40142336	2	1
40034675	2	9	40126259	12	4	40142430	24	13
40042716	2	11	40126263	18	3	40144416	4	53

NUMERICAL INDEX OF PARTS

PART NO	PAGE	REF NO.	PART NO	PAGE	REF NO.	PART NO	PAGE	REF NO.
40193158	24	14	SL4040691SC	12	6	TA1550902R0	2	39
B111105100B	2	41	SL4041091SC	20	4	TA1650406R0	2	7
B1111563000	2	35	SL4041491SC	10	6	WP0320501SC	16	58-59
B1132521000	2	12	SL4051091SC	8	4	WP0320501SE	18	10
B1203512000	6	11	SM1040750TP	2	34	WP0430801SC	20	16
B1516210D00	24	19	SM1051052TN	2	37	WP0450000SD	16	61
B2508047000	14	32-33	SM4021601SN	12	3	WP0501016SD	20	12
B91210120A0	24	26	SM4040655SP	2	36	WP0501016SD	22	8
BT0400251EB	8	7	SM4040655SP	16	65	WP0531001SC	6	6
BT0600401EB	20	2	SM4040855SP	2	29	WP0550800SP	16	62-63
BT0630520Z0	24	36	SM4050655SP	24	31	WP0551016SH	24	15
BT0800501EB	20	3	SM4050855SP	2	46	WP0820516SP	6	36
CM300200001	2	14	SM4050855SP	8	28	WS0510002KN	20	22
CM600100101	2	43	SM4050855SP	24	21			
CM600100201	24	10	SM4051055SP	2	22			
D2112555B00	2	40	SM4051255SP	18	12			
EA9500B0100	8	24	SM4055501SC	2	3			
EA9500B0100	16	66	SM4061255SP	24	38			
EA9500B0100	18	16	SM6030602TP	14	46-47			
EA9500B0100	20	10	SM6030602TP	18	9			
EA9500B0200	20	9	SM6040802TP	16	48-49			
HX00150000B	24	22	SM6041002TP	14	36-37			
M13517B1602	24	17	SM6051202TP	8	18			
MAO11532000	24	32	SM6051202TP	20	21			
NM6030001SC	18	7	SM6051602TP	16	50-51			
NM6050001SP	20	23	SM6052502TN	8	10			
NM6050001SP	24	16	SM6054502TN	6	5			
NS6110310SP	14	40-41	SM6061002TP	8	2			
PA2004004A0	8	5	SM8040412TP	4	48			
PF055107000	20	19	SM8050612TP	8	16			
PJ025100003	20	18	SM8060612TP	6	37			
PJ046052503	8	6	SM8060612TP	8	13			
PJ304065101	20	20	SM8060812TP	6	22			
SB108001900	6	21	SM8060812TP	16	52-53			
SB120001800	6	13	SM80608A2TP	6	14			
SB120002700	6	26	SM8080812TP	6	38			
SD0380556TL	2	13	SS4090515SP	18	5			
SD0460576TP	14	30-31	SS7060610SP	16	54-55			
SD0550271TP	18	8	SS7110740TP	8	25			
SD0650321TP	14	42-43	SS8110422TP	16	56-57			
SD0651301TH	14	34-35	SS8151550SP	6	16			
SK3412000SC	22	7	ST4041451SN	20	15			
SK3482001SE	20	8	TA1030402R0	2	17			
SK3482001SE	22	2	TA1250406R0	2	19			
SK3512001SE	20	11	TA1270502R0	2	18			